

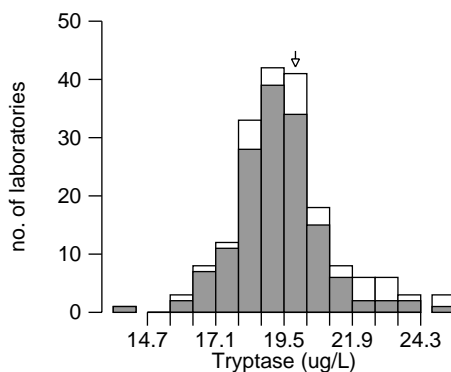
184 / 208 (88%) laboratories returned results for this distribution. Samples 163-1 and 163-2 were both made from pooled normal human serum with added tryptase.

□ All methods
■ Phadia 250

Your MRVIS is 55 ●
Your MRBIS is +55 ●
Your SDBIS is 16 ●

Specimen : 163-1

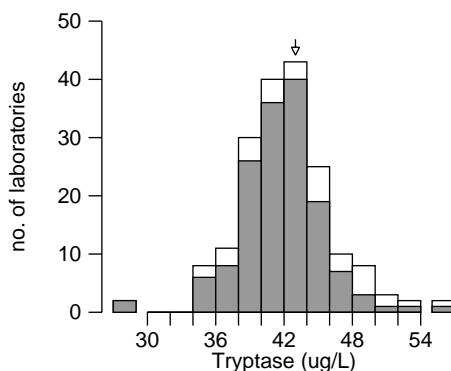
	n	Mean	SD	CV(%)
All methods [ALTM]	184	19.50	1.58	8.1
Phadia 100	11	22.29	2.02	9.1
Phadia 1000	22	19.54	1.76	9.0
Phadia 250	150	19.29	1.36	7.0
Phadia 2500	1	21.00		



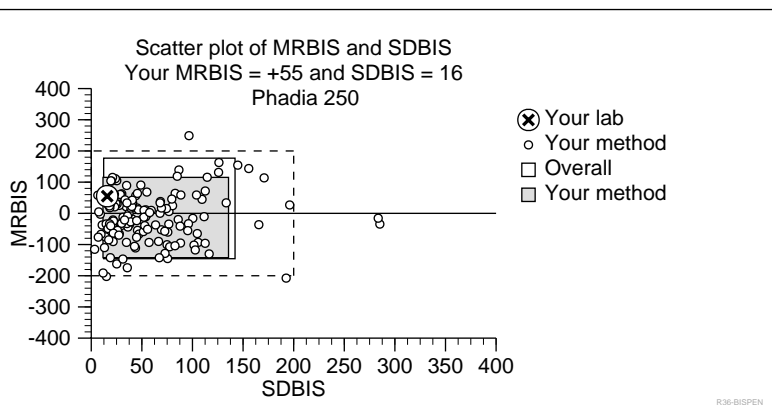
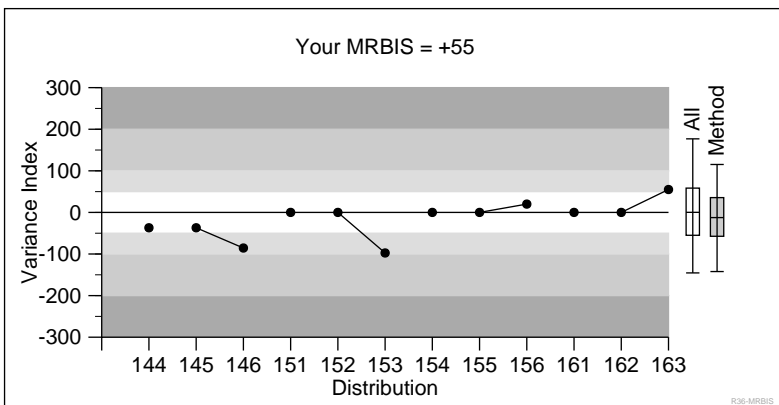
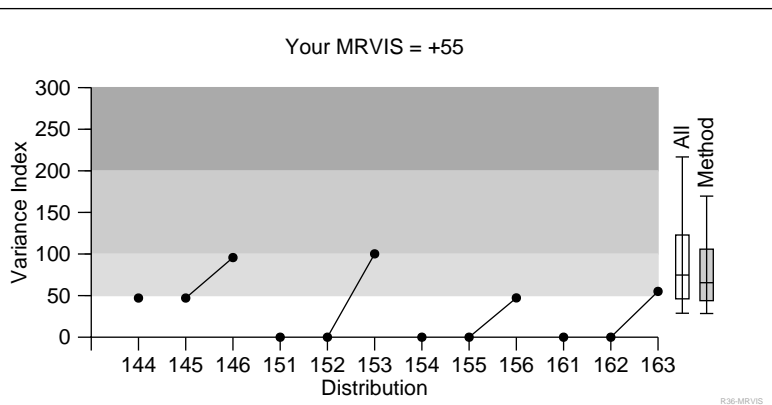
Your result 20.2
Target value (ALTM) 19.50
Your BIS +45
Standard Uncertainty 0.15
CCV 8

Specimen : 163-2

	n	Mean	SD	CV(%)
All methods [ALTM]	184	42.14	3.46	8.2
Phadia 100	11	47.15	3.68	7.8
Phadia 1000	22	41.35	4.14	10.0
Phadia 250	150	41.89	3.07	7.3
Phadia 2500	1	46.00		



Your result 43.7
Target value (ALTM) 42.14
Your BIS +46
Standard Uncertainty 0.32
CCV 8



Performance Criteria

- Ideal MRVIS < 50
- Good MRVIS 50-100
- Adequate MRVIS 100-200
- Poor MRVIS > 200 or SDBIS > 200

For further performance criteria information please see our website at www.immqas.org.uk.
If laboratories require further assistance please contact the centre.