

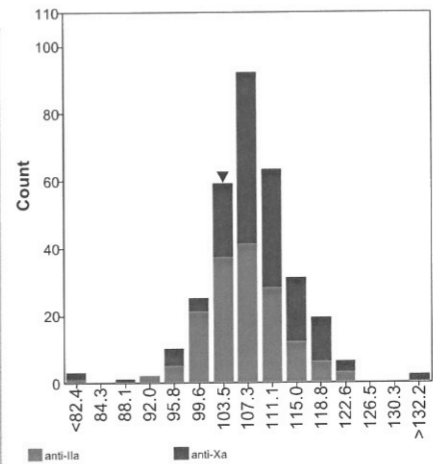
Thrombophilia Part 1

Antithrombin activity

Sample No 16.46
 Sample Details Plasma of a patient with a heterozygous Protein C deficiency
 Units: % or IU/dL
 Prior Use: None
 Stability 28-Feb-2017
 Homogeneity 0.0 % Homogeneity Parameter Protein C
 Response Rate 86 %

Classification	Normal	BorderLine normal	Borderline abnormal	Abnormal	No classificatio
Total	306	1	0	5	2

	n	assigned value	CV (%)	range	your result	z-score
Total Group	313	108	5.7	41 - 148	103	-1.14
Chromogenic, anti-IIa	156	107	5.7	41 - 124		
Homemade	1	103				
Siemens Antithrombin III	51	104	4.3	92 - 114		
Stago Stachrom ATIII	103	108	6.1	41 - 124		
Tcoag TriniCHROM Antithrombin IIa	1	102				
Chromogenic, anti-Xa	157	109	5.2	50 - 148	103	-1.14
Chromogenix Coamatic Antithrombin	10	109	4.6	95 - 118		
Chromogenix Coamatic LR Antithrombin	1	107				
DG-Chromat ATIII	1	104				
Helena Chromz-AT	1	105				
Hyphen Biophen Antithrombin (anti-Xa)	4	109		106 - 115		
Hyphen Biophen AT (LRT)	3	108		108 - 109		
I.L. HemosIL Antithrombin	5	114		104 - 119		
I.L. HemosIL liquid Antithrombin	78	111	5.5	53 - 148	103	-1.14
Siemens Innovance AT	52	107	4.7	50 - 117		
Sysmex L system AT	1	106				
Tcoag TriniCHROM Antithrombin Xa	1	134				



Thrombophilia Part 1

Protein C clotting activity

No. of Responders
78

Sample No 16.45
Sample Details Coagulation Borderline Control Plasma
Units: % or IU/dL
Prior Use: 2015-4

Stability 31-Dec-2017

Homogeneity 2.5 %

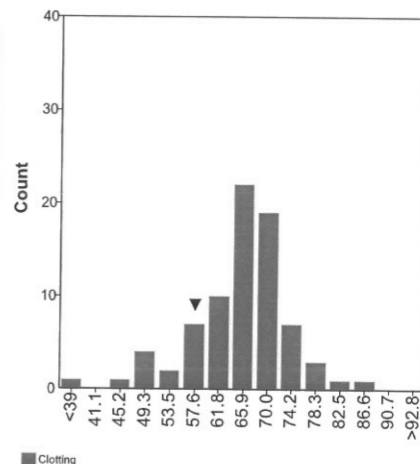
Homogeneity Parameter

Antithrombin

Response Rate 21 %

Classification	Normal	BorderLine normal	Borderline abnormal	Abnormal	No classificatio
Total	21	4	23	28	2

	n	assigned value	CV (%)	range	your result	z-score
Total Group	78	66	10.2	15 - 85	60	-0.94
Clotting	78	66	10.2	15 - 85	60	-0.94
Hyphen Biomed Hemoclot Protein C	4	61		50 - 68		
I.L. HemosIL Proclot C	13	62	16.5	15 - 85	60	-0.94
Precision Biologic Cryocheck Clot C	3	63		51 - 69		
Siemens Prot C Reagent (coagulometric)	19	66	5.7	56 - 76		
Stago Staclot Protein C	39	67	9.7	46 - 81		



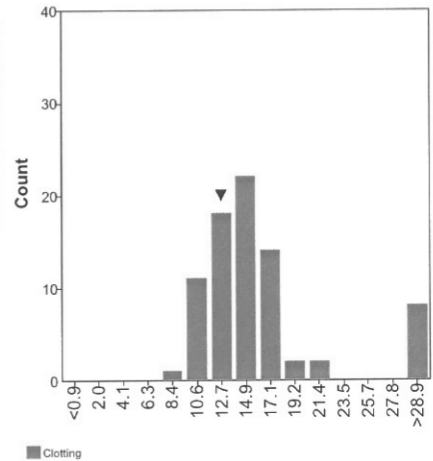
Thrombophilia Part 1

Protein C clotting activity

Sample No 16.46
Sample Details Plasma of a patient with a heterozygous Protein C deficiency
 Units: % or IU/dL
 Prior Use: None
Stability 28-Feb-2017
Homogeneity 0.0 % **Homogeneity Parameter** Protein C
Response Rate 21 %

Classification	Normal	BorderLine normal	Borderline abnormal	Abnormal	No classificatio
Total	0	0	0	77	1

	n	assigned value	CV (%)	range	your result	z-score
Total Group	78	15	23.5	9 - 56	12	-0.74
Clotting	78	15	23.5	9 - 56	12	-0.74
Hyphen Biomed Hemoclot Protein C	4	19		12 - 21		
I.L. HemosIL Proclot C	13	18	40.6	12 - 56	12	-0.74
Precision Biologic Cryocheck Clot C	3	15		9 - 29		
Siemens Prot C Reagent (coagulometric)	19	16	18.3	10 - 49		
Stago Staclot Protein C	39	13	19.3	10 - 40		



Thrombophilia Part 1

Protein S activity

No. of Responders
156

Sample No 16.45
Sample Details Coagulation Borderline Control Plasma
Units: % or IU/dL
Prior Use: 2015-4

Stability 31-Dec-2017

Homogeneity 2.5 %

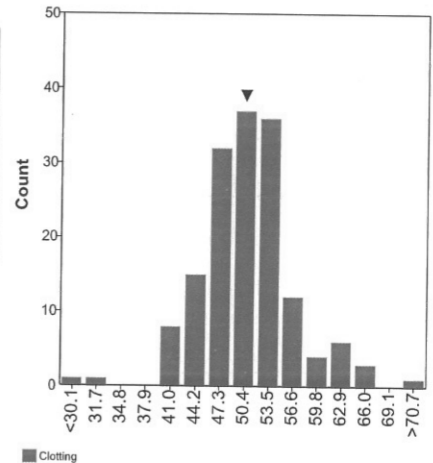
Homogeneity Parameter

Antithrombin

Response Rate 43 %

Classification	Normal	BorderLine normal	Borderline abnormal	Abnormal	No classificatio
Total	10	14	26	103	3

	n	assigned value	CV (%)	range	your result	z-score
Total Group	156	50	10.1	30 - 71	51	0.17
Clotting	156	50	10.1	30 - 71	51	0.17
Hyphen Biomed Hemoclot Protein S	4	57		51 - 66		
I.L. HemosIL ProS	35	51	8.2	43 - 64	51	0.17
Other	2	53		52 - 54		
Precision Biologic CryoCheck Clot S	2	42		41 - 43		
Siemens Protein S Ac	38	50	13.2	30 - 64		
Stago Staclot Protein S	75	50	9.3	33 - 71		



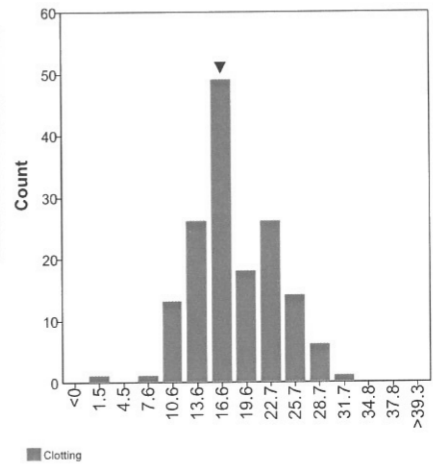
Thrombophilia Part 1

Protein S activity

Sample No 16.46
Sample Details Plasma of a patient with a heterozygous Protein C deficiency
 Units: % or IU/dL
 Prior Use: None
Stability 28-Feb-2017
Homogeneity 0.0 % **Homogeneity Parameter** Protein C
Response Rate 43 %

Classification	Normal	BorderLine normal	Borderline abnormal	Abnormal	No classificatio
Total	2	0	0	152	2

	n	assigned value	CV (%)	range	your result	z-score
Total Group	155	18	28.5	3 - 32	18	-0.07
Clotting	155	18	28.5	3 - 32	18	-0.07
Hyphen Biomed Hemoclot Protein S	4	29		22 - 32		
I.L. HemosIL ProS	35	23	16.2	14 - 30	18	-0.07
Other	2	27		25 - 28		
Precision Biologic CryoCheck Clot S	2	10		9 - 10		
Siemens Protein S Ac	38	20	19.2	13 - 30		
Stago Staclot Protein S	74	15	18.7	3 - 25		



Thrombophilia Part 2

APC Resistance (with FV deficient plasma)

No. of Responders
194

Sample No 16.47
Sample Details Normal Coagulation Control Plasma
Units:
Prior Use: None

Stability 31-Dec-2017

Homogeneity 1.5 %

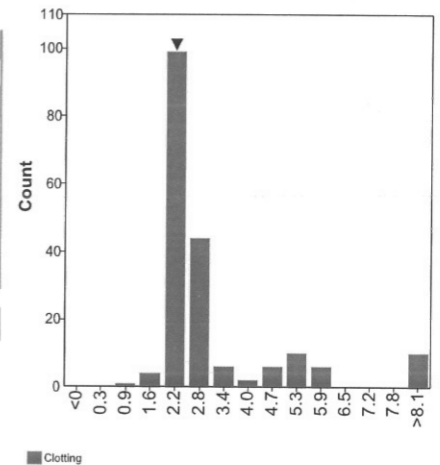
Homogeneity Parameter APTT

Response Rate 53 %

Classification	Normal	Borderline	Abnormal	No classificatio
Total	175	13	6	0

Secondary Classificatio	Homozygous FVL	Heterozygous FVL	Non conclusive
Total	2	2	4

	n	assigned value	CV (%)	range	your result	z-score
Total Group	177	2.75	36.5	0.91 - 5.88	2.49	0.42
American Diagnostica APC	1	2.30				
Chromogenix APCR-V / I.L. HemosIL FVL	99	2.41	7.9	1.93 - 3.03	2.49	0.42
Chromogenix Coatest APC Resistance	24	2.31	7.1	2.05 - 2.70		
Homemade	6	2.13		0.91 - 3.40		
Other	1	2.46				
Pentapharm Pefakit APC-R FVL	28	4.91	16.3	3.09 - 5.88		
Siemens ProC Global / FV	18	2.10	13.7	1.61 - 2.64		
Stago Staclot APC-R	11	148.67	12.9	3.60 - 182.00		
Normalised ratio	65	0.90	8.4	0.62 - 1.28	0.89	0.42



Thrombophilia Part 2

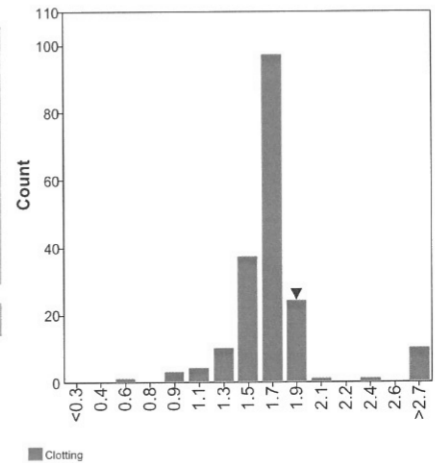
APC Resistance (with FV deficient plasma)

Sample No 16.48
Sample Details Plasma of a patient with a heterozygous Factor V Leiden mutation
 Units:
 Prior Use: None
Stability 15-Feb-2017
Homogeneity 0.0 % **Homogeneity Parameter** APCr
Response Rate 53 %

Classification	Normal	Borderline	Abnormal	No classificatio
Total	3	2	189	0

Secondary Classificatio	Homozygous FVL	Heterozygous FVL	Non conclusive
Total	13	113	24

	n	assigned value	CV (%)	range	your result	z-score
Total Group	177	1.62	12.2	0.54 - 2.39	1.78	0.94
American Diagnostica APC	1	1.70				
Chromogenix APCR-V / I.L. HemosIL FVL	99	1.70	5.0	1.49 - 1.84	1.78	0.94
Chromogenix Coatest APC Resistance	24	1.65	4.4	1.52 - 2.39		
Homemade	6	1.44		0.54 - 2.00		
Other	1	1.76				
Pentapharm Pefakit APC-R FVL	28	1.53	5.1	1.27 - 1.72		
Siemens ProC Global / FV	18	1.28	18.9	0.97 - 1.85		
Stago Staclot APC-R	11	79.18	11.8	1.53 - 93.00		
Normalised ratio	65	0.61	15.4	0.24 - 1.06	0.61	0.94



Coagulation Factor Module I

Factor VIII (clotting activity)

No. of Responders
224

Sample No 16.52
Sample Details Plasma with an elevated Factor VIII level
Units: % or IU/dL
Prior Use: None

Stability 30-Nov-2017

Homogeneity 1.7 %

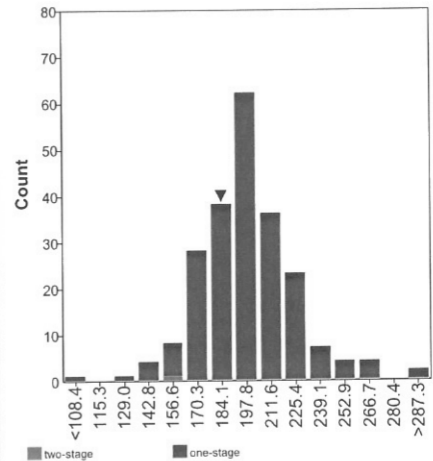
Homogeneity Parameter

Factor VIII

Response Rate 86 %

Classification	Normal	BorderLine normal	Borderline abnormal	Abnormal	No classificatio
Total	93	8	9	99	15

	n	assigned value	CV (%)	range	your result	z-score
Total Group	218	198	11.4	82 - 494	187	-0.10
two-stage clotting assay	1	150				
IL HemosIL APTT-SP liquid silica	1	150				
one-stage clotting assay	217	198	11.3	82 - 494	187	-0.10
IL HemosIL APTT-SP liquid silica	10	192	10.1	172 - 220		
IL HemosIL SynthASil	62	189	10.6	132 - 494	187	-0.10
Siemens Actin	1	140				
Siemens Actin FS	28	207	8.4	163 - 257		
Siemens Actin FSL	16	200	12.6	166 - 254		
Siemens Pathromtin SL	24	191	7.5	146 - 216		
Stago Cephalin/Kaolin/CK Prest	28	206	9.8	177 - 262		
Stago Cephascreen	9	214		188 - 270		
Stago PTT (automate)/STA APTT	27	206	14.4	82 - 271		
Stago PTT-LA	1	187				
Tcoag Automated APTT	2	181		168 - 193		
Tcoag TriniClot APTT S	4	198		183 - 201		
Tcoag TriniClot APTT-HS	5	206		159 - 239		



Coagulation Factor Module I

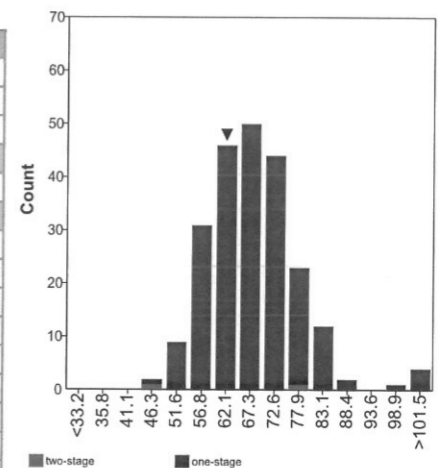
Factor VIII (clotting activity)

Sample No 16.53
Sample Details Plasma of a patient with a low Factor XI level
 Units: % or IU/dL
 Prior Use: None
Stability 24-Mar-2017
Homogeneity 2.1 %
Response Rate 86 %

Homogeneity Parameter Factor XI

Classification	Normal	BorderLine normal	Borderline abnormal	Abnormal	No classificatio
Total	165	28	13	18	0

	n	assigned value	CV (%)	range	your result	z-score
Total Group	224	67	12.8	47 - 230	60	-0.81
two-stage clotting assay	2	63		49 - 77		
IL HemosIL APTT-SP liquid silica	1	49				
Siemens Pathromtin SL	1	77				
one-stage clotting assay	222	67	12.7	47 - 230	60	-0.81
IL HemosIL APTT-SP liquid silica	10	65	12.3	51 - 76		
IL HemosIL SynthASil	64	61	8.9	47 - 200	60	-0.81
Siemens Actin	1	59				
Siemens Actin FS	29	70	10.2	57 - 84		
Siemens Actin FSL	16	69	8.9	60 - 78		
Siemens Pathromtin SL	25	70	7.5	59 - 85		
Stago Cephalin/Kaolin/CK Prest	28	68	9.9	54 - 110		
Stago Cephascreen	9	72		59 - 100		
Stago PTT (automate)/STA APTT	28	73	13.1	55 - 230		
Stago PTT-LA	1	63				
Tcoag Automated APTT	2	69		60 - 77		
Tcoag TriniClot APTT S	4	68		66 - 72		
Tcoag TriniClot APTT-HS	5	71		57 - 85		



Coagulation Factor Module I

Factor IX

No. of Responders
224

Sample No 16.52
Sample Details Plasma with an elevated Factor VIII level
Units: % or IU/dL
Prior Use: None

Stability 30-Nov-2017

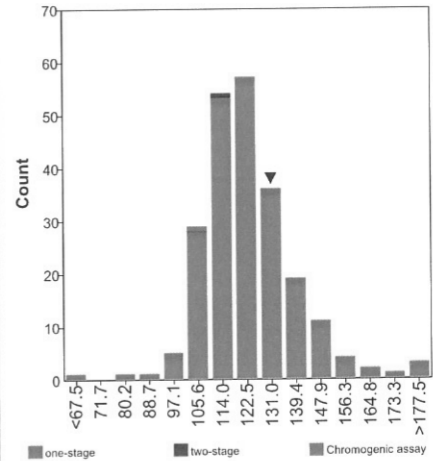
Homogeneity 1.7 %

Homogeneity Parameter Factor VIII

Response Rate 86 %

Classification	Normal	BorderLine normal	Borderline abnormal	Abnormal	No classificatio
Total	208	4	4	5	3

	n	assigned value	CV (%)	range	your result	z-score
Total Group	224	122	11.3	67 - 240	130	0.88
one-stage clotting assay	222	123	11.2	67 - 240	130	0.88
IL HemosIL APTT lyophilised silica	5	118		115 - 132		
IL HemosIL APTT-SP liquid silica	8	118		109 - 137		
IL HemosIL SynthAsil	65	121	8.9	76 - 240	130	0.88
Siemens Actin	3	124		85 - 136		
Siemens Actin FS	26	120	9.5	97 - 161		
Siemens Actin FSL	17	118	10.5	101 - 154		
Siemens Pathromtin SL	26	115	6.9	100 - 140		
Stago Cephalin/Kaolin/CK Prest	26	126	10.5	97 - 150		
Stago Cephascreen	10	147	9.1	131 - 170		
Stago PTT (automate)/STA APTT	24	133	12.7	67 - 157		
Stago PTT-LA	1	113				
Tcoag Automated APTT	2	114		107 - 121		
Tcoag TriniClot APTT S	4	122		104 - 144		
Tcoag TriniClot APTT-HS	5	124		112 - 139		
Chromogenic assay	1	105				
Rosix Factor IX	1	105				
two-stage clotting assay	1	112				
Siemens Pathromtin SL	1	112				



Coagulation Factor Module I

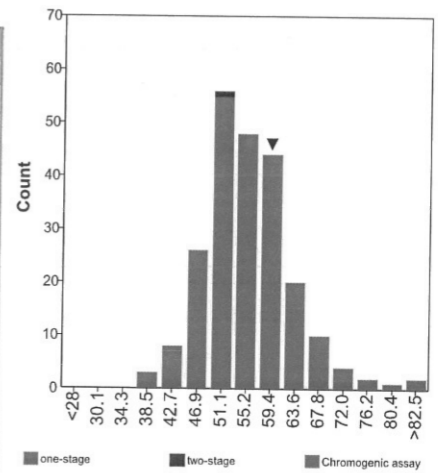
Factor IX

Sample No 16.53
Sample Details Plasma of a patient with a low Factor XI level
 Units: % or IU/dL
 Prior Use: None
Stability 24-Mar-2017
Homogeneity 2.1 %
Response Rate 86 %

Homogeneity Parameter Factor XI

Classification	Normal	BorderLine normal	Borderline abnormal	Abnormal	No classificatio
Total	54	33	44	93	0

	n	assigned value	CV (%)	range	your result	z-score
Total Group	224	55	12.4	40 - 134	60	0.65
one-stage clotting assay	222	55	12.3	40 - 134	60	0.65
IL HemosIL APTT lyophilised silica	5	56		40 - 60		
IL HemosIL APTT-SP liquid silica	8	51		42 - 63		
IL HemosIL SynthAsil	65	51	9.3	40 - 99	60	0.65
Siemens Actin	3	58		57 - 59		
Siemens Actin FS	26	56	6.3	42 - 62		
Siemens Actin FSL	17	53	8.8	44 - 59		
Siemens Pathromtin SL	26	55	10.4	47 - 66		
Stago Cephalin/Kaolin/CK Prest	26	60	9.9	46 - 72		
Stago Cephascreen	10	66	14.8	53 - 79		
Stago PTT (automate)/STA APTT	24	62	9.3	47 - 134		
Stago PTT-LA	1	49				
Tcoag Automated APTT	2	56		55 - 56		
Tcoag TriniClot APTT S	4	56		50 - 64		
Tcoag TriniClot APTT-HS	5	58		52 - 66		
Chromogenic assay	1	41				
Rosix Factor IX	1	41				
two-stage clotting assay	1	50				
Siemens Pathromtin SL	1	50				



Coagulation Factor Module I

Factor XI

No. of Responders
212

Sample No 16.52
Sample Details Plasma with an elevated Factor VIII level
Units: % or IU/dL
Prior Use: None

Stability 30-Nov-2017

Homogeneity 1.7 %

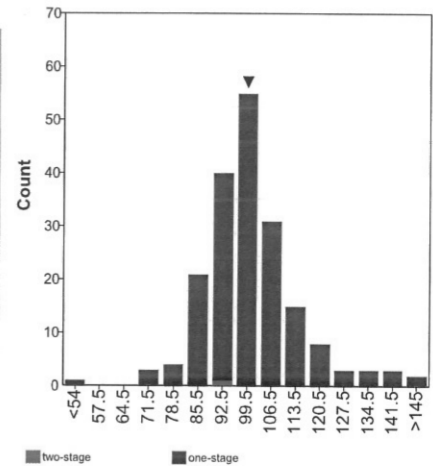
Homogeneity Parameter

Factor VIII

Response Rate 81 %

Classification	Normal	BorderLine normal	Borderline abnormal	Abnormal	No classificatio
Total	207	1	0	1	3

	n	assigned value	CV (%)	range	your result	z-score
Total Group	212	99	11.4	35 - 225	102	0.78
two-stage clotting assay	1	90				
Siemens Pathromtin SL	1	90				
one-stage clotting assay	211	100	11.4	35 - 225	102	0.78
IL HemosIL APTT lyophilised silica	4	86		80 - 104		
IL HemosIL APTT-SP liquid silica	9	91		83 - 112		
IL HemosIL SynthAsil	62	97	7.1	72 - 225	102	0.78
Siemens Actin	2	99		71 - 127		
Siemens Actin FS	25	108	10.8	83 - 124		
Siemens Actin FSL	17	101	11.6	85 - 126		
Siemens Pathromtin SL	24	99	7.3	82 - 131		
Stago Cephalin/Kaolin/CK Prest	26	100	9.5	86 - 131		
Stago Cephascreen	7	108		82 - 141		
Stago PTT (automate)/STA APTT	23	102	19.1	35 - 139		
Stago PTT-LA	1	90				
Tcoag Automated APTT	2	93		74 - 111		
Tcoag TriniClot APTT S	4	101		83 - 110		
Tcoag TriniClot APTT-HS	5	96		88 - 109		



Coagulation Factor Module I

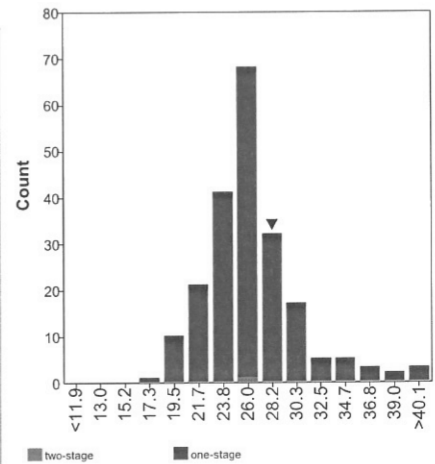
Factor XI

Sample No 16.53
Sample Details Plasma of a patient with a low Factor XI level
 Units: % or IU/dL
 Prior Use: None
Stability 24-Mar-2017
Homogeneity 2.1 %
Response Rate 81 %

Homogeneity Parameter Factor XI

Classification	Normal	BorderLine normal	Borderline abnormal	Abnormal	No classificatio
Total	4	0	1	206	1

	n	assigned value	CV (%)	range	your result	z-score
Total Group	208	26	13.5	17 - 131	28	0.51
two-stage clotting assay	1	27				
Siemens Pathromtin SL	1	27				
one-stage clotting assay	207	26	13.5	17 - 131	28	0.51
IL HemosIL APTT lyophilised silica	4	23		19 - 29		
IL HemosIL APTT-SP liquid silica	9	27		17 - 30		
IL HemosIL SynthAsil	62	25	10.3	20 - 59	28	0.51
Siemens Actin	1	28				
Siemens Actin FS	23	26	8.8	22 - 72		
Siemens Actin FSL	17	26	22.9	19 - 35		
Siemens Pathromtin SL	24	30	12.9	21 - 38		
Stago Cephalin/Kaolin/CK Prest	26	26	10.2	21 - 29		
Stago Cephascreen	6	28		22 - 34		
Stago PTT (automate)/STA APTT	23	27	17.1	20 - 131		
Stago PTT-LA	1	25				
Tcoag Automated APTT	2	23		19 - 26		
Tcoag TriniClot APTT S	4	24		20 - 28		
Tcoag TriniClot APTT-HS	5	24		24 - 28		



Coagulation Factor Module I

Factor XII

No. of Responders
194

Sample No 16.52
Sample Details Plasma with an elevated Factor VIII level
Units: % or IU/dL
Prior Use: None

Stability 30-Nov-2017

Homogeneity 1.7 %

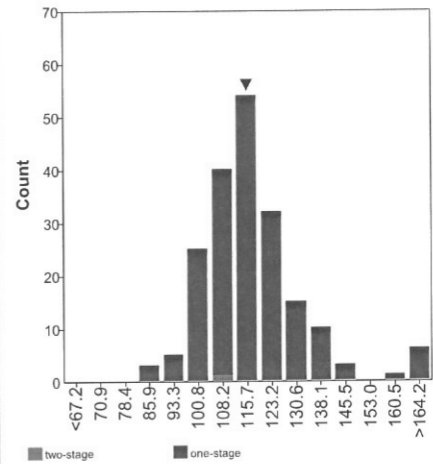
Response Rate 74 %

Homogeneity Parameter

Factor VIII

Classification	Normal	BorderLine normal	Borderline abnormal	Abnormal	No classificatio
Total	190	0	0	1	3

	n	assigned value	CV (%)	range	your result	z-score
Total Group	194	116	10.5	86 - 220	118	0.15
two-stage clotting assay	1	105				
Siemens Pathromtin SL	1	105				
one-stage clotting assay	193	116	10.5	86 - 220	118	0.15
Helena Laboratories APTT-SA	1	104				
Hemoliance Synthasil APTT	2	129		121 - 137		
IL HemosIL APTT lyophilised silica	2	129		116 - 141		
IL HemosIL APTT-SP liquid silica	9	118		99 - 135		
IL HemosIL Synthasil	60	117	7.8	88 - 207	118	0.15
Siemens Actin	1	116				
Siemens Actin FS	27	109	9.5	86 - 209		
Siemens Actin FSL	12	114	9.4	102 - 168		
Siemens Pathromtin SL	23	108	7.0	92 - 121		
Stago Cephalin/Kaolin/CK Prest	24	122	10.3	95 - 146		
Stago Cephascreen	6	102		89 - 178		
Stago PTT (automate)/STA APTT	14	125	11.7	109 - 220		
Tcoag Automated APTT	2	122		113 - 130		
Tcoag TriniClot APTT S	5	120		98 - 135		
Tcoag TriniClot APTT-HS	5	106		91 - 121		



Coagulation Factor Module I

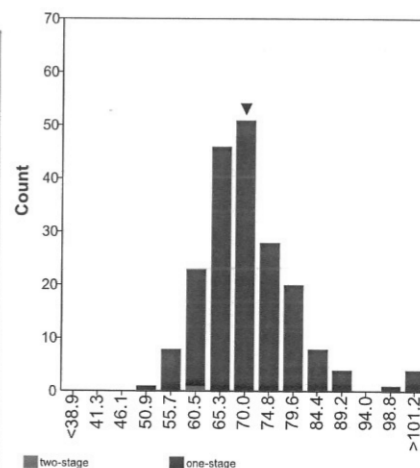
Factor XII

Sample No 16.53
Sample Details Plasma of a patient with a low Factor XI level
 Units: % or IU/dL
 Prior Use: None
Stability 24-Mar-2017
Homogeneity 2.1 %
Response Rate 74 %

Homogeneity Parameter Factor XI

Classification	Normal	BorderLine normal	Borderline abnormal	Abnormal	No classificatio
Total	152	15	8	18	1

	n	assigned value	CV (%)	range	your result	z-score
Total Group	194	70	11.2	52 - 153	70	-0.04
two-stage clotting assay	1	60				
Siemens Pathromtin SL	1	60				
one-stage clotting assay	193	70	11.1	52 - 153	70	-0.04
Helena Laboratories APTT-SA	1	71				
Hemoliance Synthasil APTT	2	77		75 - 78		
IL HemosIL APTT lyophilised silica	2	75		64 - 85		
IL HemosIL APTT-SP liquid silica	9	72		52 - 85		
IL HemosIL SynthAsil	60	69	7.5	60 - 114	70	-0.04
Siemens Actin	1	75				
Siemens Actin FS	27	72	10.1	54 - 85		
Siemens Actin FSL	12	67	11.8	59 - 87		
Siemens Pathromtin SL	23	65	9.8	54 - 73		
Stago Cephalin/Kaolin/CK Prest	24	72	13.2	58 - 86		
Stago Cephascreen	6	65		56 - 109		
Stago PTT (automate)/STA APTT	14	78	18.5	63 - 153		
Tcoag Automated APTT	2	108		76 - 140		
Tcoag TriniClot APTT S	5	75		63 - 82		
Tcoag TriniClot APTT-HS	5	68		63 - 71		



Coagulation Factor Module II

Factor II

No. of Responders
185

Sample No 16.54

Sample Details Borderline Coagulation Control Plasma
Units: % or IU/dL
Prior Use: 2015-4

Stability 31-Dec-2017

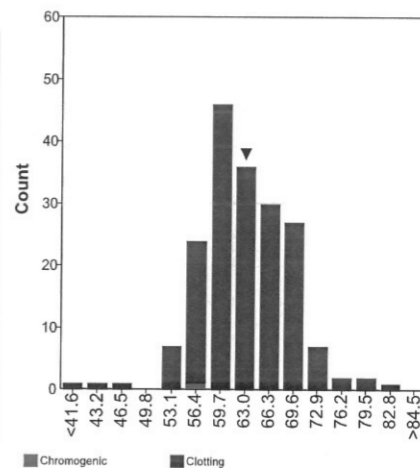
Homogeneity 2.9 %

Homogeneity Parameter PT

Response Rate 84 %

Classification	Normal	BorderLine normal	Borderline abnormal	Abnormal	No classificatio
Total	51	37	25	71	1

	n	assigned value	CV (%)	range	your result	z-score
Total Group	185	63	8.5	21 - 82	63	-0.01
Chromogenic assay	1	57				
Homemade	1	57				
Clotting Assay	184	63	8.5	21 - 82	63	-0.01
I.L. HemosIL PT-Fibrinogen - HS Plus	1	55				
I.L. HemosIL Recombiplastin 2G	67	61	8.2	52 - 74	63	-0.01
Siemens Innovin	32	66	6.6	59 - 73		
Siemens Pathromtin SL	1	45				
Siemens Thromborel S	24	66	8.2	56 - 82		
Stago (STA) Neoplastin Ci	8	63		56 - 67		
Stago (STA) Neoplastin Ci Plus	41	63	6.8	21 - 75		
Stago Neoplastin R	6	63		58 - 68		
Tcoag TriniCLOT PT Excel	1	79				
Tcoag TriniCLOT PT HTF	3	58		46 - 62		



Coagulation Factor Module II

Factor V

No. of Responders
200

Sample No 16.54
Sample Details Borderline Coagulation Control Plasma
Units: % or IU/dL
Prior Use: 2015-4

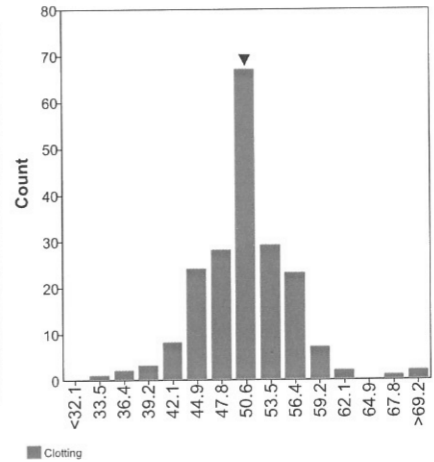
Stability 31-Dec-2017

Homogeneity 2.9 % Homogeneity Parameter PT

Response Rate 90 %

Classification	Normal	BorderLine normal	Borderline abnormal	Abnormal	No classificatio
Total	16	16	25	143	0

	n	assigned value	CV (%)	range	your result	z-score
Total Group	197	51	9.2	34 - 99	50	-0.25
Clotting Assay	197	51	9.2	34 - 99	50	-0.25
Diagnostics Grifols DG-PT	1	50				
I.L. HemosIL PT-Fibrinogen - HS Plus	1	54				
I.L. HemosIL Recombiplastin 2G	70	51	10.0	40 - 62	50	-0.25
Siemens Innovin	37	52	7.6	44 - 62		
Siemens Pathromtin SL	1	45				
Siemens Thromborel S	24	49	12.7	34 - 66		
Stago (STA) Neoplastin CI	6	53		42 - 58		
Stago (STA) Neoplastin CI Plus	44	51	7.5	41 - 92		
Stago Neoplastin R	9	49		44 - 54		
Tcoag Simplastin HTF	3	45		37 - 47		
Tcoag TriniCLOT PT Excel	1	99				



Coagulation Factor Module II

Factor VII

No. of Responders
199

Sample No 16.54
Sample Details Borderline Coagulation Control Plasma
Units: % or IU/dL
Prior Use: 2015-4

Stability 31-Dec-2017

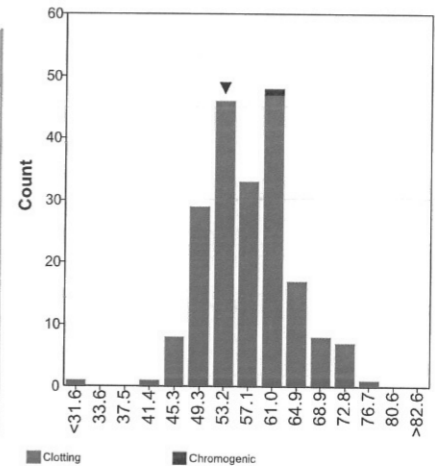
Homogeneity 2.9 %

Homogeneity Parameter PT

Response Rate 90 %

Classification	Normal	BorderLine normal	Borderline abnormal	Abnormal	No classificatio
Total	45	37	40	75	2

	n	assigned value	CV (%)	range	your result	z-score
Total Group	199	57	11.1	27 - 77	53	-0.61
Clotting Assay	198	57	11.2	27 - 77	53	-0.61
I.L. HemosIL PT-Fibrinogen - HS	1	51				
I.L. HemosIL PT-Fibrinogen - HS Plus	1	51				
I.L. HemosIL Recombiplastin 2G	71	52	8.0	43 - 70	53	-0.61
Siemens Innovin	39	61	8.2	52 - 73		
Siemens Pathromtin SL	1	60				
Siemens Thromborel S	23	61	9.6	46 - 74		
Stago (STA) Neoplastin CI	7	61		55 - 77		
Stago (STA) Neoplastin CI Plus	43	58	9.6	27 - 69		
Stago Neoplastin R	8	60		52 - 72		
Tcoag Simplastin Excel S	1	66				
Tcoag Simplastin HTF	3	61		55 - 62		
Chromogenic assay	1	60				



Coagulation Factor Module II

Factor X

No. of Responders
190

Sample No 16.54
Sample Details Borderline Coagulation Control Plasma
Units: % or IU/dL
Prior Use: 2015-4

Stability 31-Dec-2017

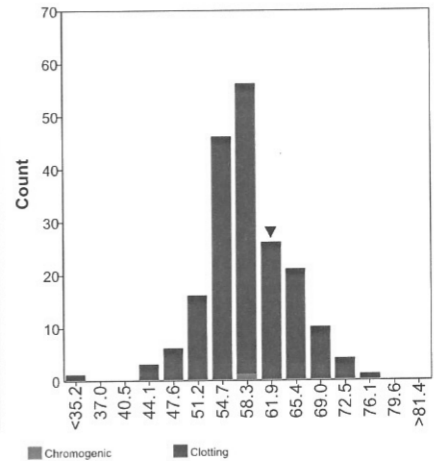
Homogeneity 2.9 %

Homogeneity Parameter PT

Response Rate 86 %

Classification	Normal	BorderLine normal	Borderline abnormal	Abnormal	No classificatio
Total	44	21	34	91	0

	n	assigned value	CV (%)	range	your result	z-score
Total Group	190	58	9.9	12 - 74	62	0.67
Chromogenic assay	1	60				
Other	1	60				
Clotting Assay	189	58	9.9	12 - 74	62	0.67
I.L. HemosIL PT-Fibrinogen	2	62		54 - 69		
I.L. HemosIL PT-Fibrinogen - HS Plus	1	53				
I.L. HemosIL Recombiplastin 2G	67	56	8.4	43 - 68	62	0.67
Siemens Innovin	36	63	8.7	53 - 73		
Siemens Thromborel S	26	60	12.0	44 - 74		
Stago (STA) Neoplastin CI	8	58		51 - 64		
Stago (STA) Neoplastin CI Plus	37	58	7.2	12 - 71		
Stago Neoplastin R	8	58		54 - 65		
Tcoag Simplastin HTF	3	55		51 - 58		
Tcoag TriniCLOT PT Excel	1	56				



Von Willebrand Factor Module

VWF antigen

No. of Responders
274

Sample No 16.56
Sample Details Plasma of a patient with type I Von Willebrand Disease
Units: % or IU/dL
Prior Use: None

Stability 14-Feb-2017

Homogeneity 1.1 %

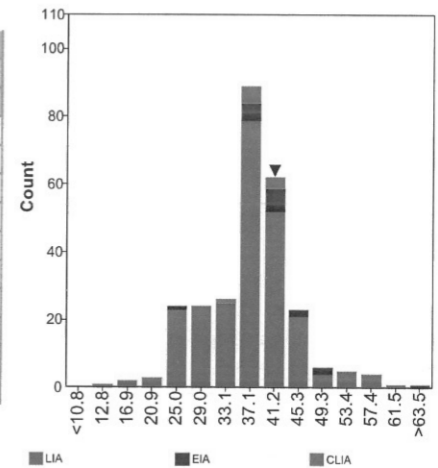
Homogeneity Parameter

VWF:Ag

Response Rate 88 %

Classification	Normal	BorderLine normal	Borderline abnormal	Abnormal	No classificatio
Total	8	7	22	232	5

	n	assigned value	CV (%)	range	your result	z-score
Total Group	271	37	17.1	13 - 85	42	0.66
Latex Immuno Assay	244	37	17.8	13 - 61	42	0.66
I.L. VWF	71	43	16.6	13 - 61	42	0.66
Siemens VWF	75	33	21.1	21 - 44		
Stago / Roche Liatest vWF	98	37	6.8	17 - 56		
Enzyme Immuno Assay	18	42	12.0	26 - 85		
BioMerieux Vidas vWF	5	43		39 - 46		
DG-EIA vWF	1	48				
Homemade (DAKO antibodies)	9	40		26 - 48		
Homemade (other)	1	36				
Stago Asserachrom vWF	2	64		42 - 85		
CLIA	9	37		32 - 42		
I.L. AcuStar VWF	9	37		32 - 42		



Von Willebrand Factor Module

VWF activity

No. of Responders
151

Sample No 16.56
Sample Details Plasma of a patient with type I Von Willebrand Disease
Units: % or IU/dL
Prior Use: None

Stability 14-Feb-2017

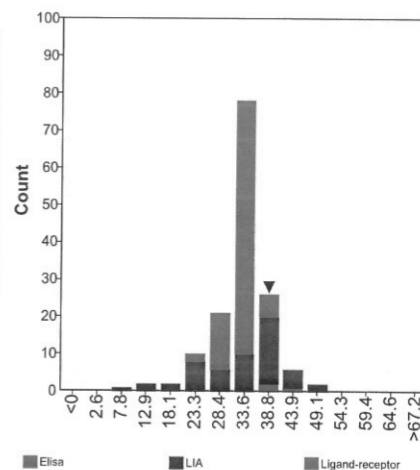
Homogeneity 1.1 %

Homogeneity Parameter VWF:Ag

Response Rate 49 %

Classification	Normal	BorderLine normal	Borderline abnormal	Abnormal	No classificatio
Total	1	3	5	138	4

	n	assigned value	CV (%)	range	your result	z-score
Total Group	148	33	12.3	8 - 48	40	1.67
Elisa	3	40		38 - 43		
ABP vWF assay	1	38				
Axis-Shield vWF activity assay	1	40				
DG-EIA VWF Activity	1	43				
Latex ImmunoAssay	54	33	25.6	8 - 48	40	1.67
I.L. Latex vWF activity	54	33	25.6	8 - 48	40	1.67
Particle ligand-receptor assay	91	33	6.4	25 - 38		
Siemens Innovance vWF Ac	91	33	6.4	25 - 38		



Von Willebrand Factor Module **VWF Collagen Binding Assay**

No. of Responders
66

Sample No 16.56
Sample Details Plasma of a patient with type I Von Willebrand Disease
Units: % or IU/dL
Prior Use: None

Stability 14-Feb-2017

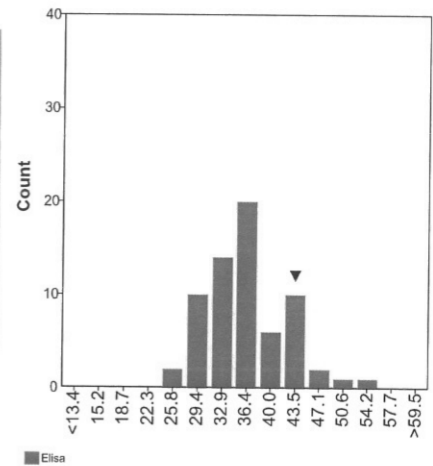
Homogeneity 1.1 %

Homogeneity Parameter VWF:Ag

Response Rate 21 %

Classification	Normal	BorderLine normal	Borderline abnormal	Abnormal	No classificatio
Total	3	1	4	56	2

	n	assigned value	CV (%)	range	your result	z-score
Total Group	66	36	15.8	26 - 55	43	1.18
ELISA	66	36	15.8	26 - 55	43	1.18
Corgenix / Reaads CBA	2	31		27 - 35		
DG-EIA CBA	2	38		33 - 42		
Homemade (DAKO antibodies)	7	38		31 - 44		
Homemade (other)	2	39		39 - 39		
Hyphen Biomed CB activity	9	35		33 - 44		
Life Diagnostics vWF:CBA assay	4	34		29 - 55		
Progen vWF:CB Elisa	2	45		43 - 47	43	1.18
Stago Asserachrom vWF:CBA	12	39	15.2	28 - 47		
Tecnoclone vWF:CBA assay	26	34	12.9	26 - 51		



Von Willebrand Factor Module

VWF Factor VIII

No. of Responders
239

Sample No 16.56
Sample Details Plasma of a patient with type I Von Willebrand Disease
Units: % or IU/dL
Prior Use: None

Stability 14-Feb-2017

Homogeneity 1.1 %

Homogeneity Parameter

VWF:Ag

Response Rate 77 %

Classification	Normal	BorderLine normal	Borderline abnormal	Abnormal	No classificatio
Total	1	2	3	225	8

	n	assigned value	CV (%)	range	your result	z-score
Total Group	239	34	11.8	20 - 69	37	0.89
One-stage clotting assay	216	34	11.3	23 - 69	37	0.89
Two-stage clotting assay	4	34		30 - 40		
Chromogenic assay	19	30	12.7	20 - 35		

