

ECAT FOUNDATION

External quality Control for Assays and Tests

With a focus on Thrombosis and Haemostasis

REPORT



SURVEY 2016-1

Main

Labcode 603

Copyright © 2016
ECAT Foundation

Thrombophilia Part 1
Antithrombin activity

 No. of Responders
 311

 Sample No 16.13
 Sample Details Normal Coagulation Control Plasma
 Units: % or IU/dL
 Prior Use: 2015-2

Stability 28-Feb-2017

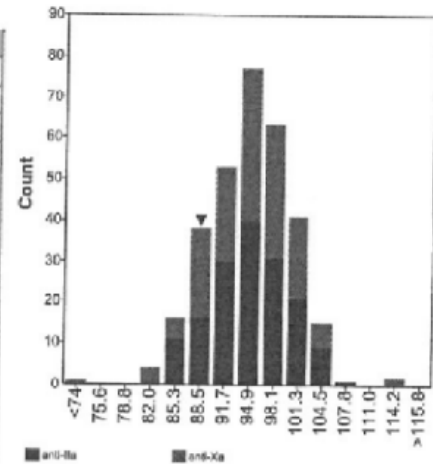
Homogeneity 1.2 %

Homogeneity Parameter APTT

Response Rate 85 %

Classification	Normal	BorderLine normal	Borderline abnormal	Abnormal	No classification
Total	309	1	0	1	0

	n	assigned value	CV (%)	range	your result	z-score
Total Group	311	95	5.4	19 - 114	87	-1.54
Chromogenix, anti-IIa	159	95	5.4	84 - 109		
Siemens Antithrombin III	54	95	5.1	85 - 106		
Stago Stachrom ATIII	104	95	5.7	84 - 109		
Tcoag TriniCHROM Antithrombin IIa	1	92				
Chromogenix, anti-Xa	152	95	5.5	19 - 114	87	-1.52
Chromogenix Coamatic Antithrombin	13	93	6.9	86 - 102		
Chromogenix Coamatic LR Antithrombin	1	95				
Hyphen Biophen Antithrombin (anti-Xa)	4	94		88 - 98		
Hyphen Biophen AT (LRT)	3	98		98 - 114		
i.L. HemosIL Antithrombin	6	97		89 - 103		
i.L. HemosIL liquid Antithrombin	73	95	5.1	19 - 114	87	-1.66
Siemens Innovance AT	50	95	5.3	83 - 104		
Sysmex L system AT	1	83				
Tcoag TriniCHROM Antithrombin Xa	1	99				



Thrombophilia Part 1

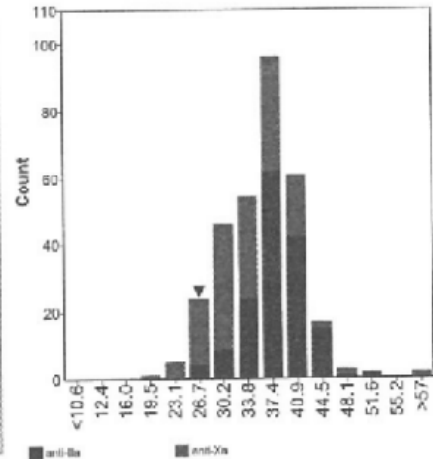
Antithrombin activity

Sample No 16.14
 Sample Details Abnormal Coagulation Control Plasma
 Units: % or IU/dL
 Prior Use: 2015-3
 Stability 28-Feb-2017
 Homogeneity 2.0 %
 Response Rate 85 %

Homogeneity Parameter APTT

Classification	Normal	BorderLine normal	Borderline abnormal	Abnormal	No classification
Total	1	1	2	307	0

	n	assigned value	CV (%)	range	your result	z-score
Total Group	311	36	14.7	20 - 96	28	-1.53
Chromogenix, anti-IIa	159	38	9.8	25 - 50		
Siemens Antithrombin III	54	37	8.1	28 - 44		
Stago Stachrom ATIII	104	39	10.4	25 - 50		
Tcoag TrinICHROM Antithrombin IIa	1	38				
Chromogenix, anti-Xa	152	34	17.2	20 - 96	28	-1.00
Chromogenix Coamatic Antithrombin	13	37	16.9	23 - 48		
Chromogenix Coamatic LR Antithrombin	1	29				
Hyphen Biophen Antithrombin (anti-Xa)	4	35		31 - 38		
Hyphen Biophen AT (LRT)	3	40		38 - 48		
I.L. HemosIL Antithrombin	6	30		28 - 40		
I.L. HemosIL liquid Antithrombin	73	30	12.9	20 - 96	28	-0.60
Siemens Innovance AT	50	38	7.5	29 - 70		
Sysmex I. system AT	1	28				
Tcoag TrinICHROM Antithrombin Xa	1	25				



Thrombophilia Part 1

Protein C clotting activity

No. of Responders
89

Sample No 16.13

Sample Details Normal Coagulation Control Plasma
Units: % or IU/dL
Prior Use: 2015-2

Stability 28-Feb-2017

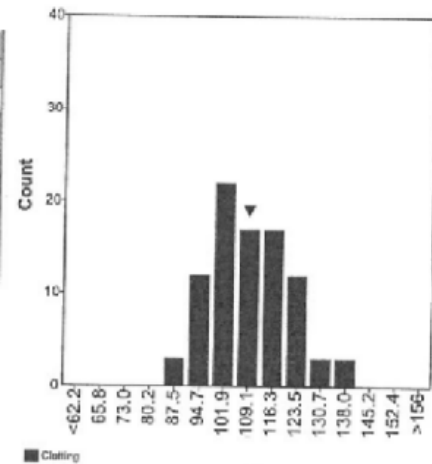
Homogeneity 1.2 %

Homogeneity Parameter APTT

Response Rate 24 %

Classification	Normal	BorderLine normal	Borderline abnormal	Abnormal	No classification
Total	88	0	0	1	0

	n	assigned value	CV (%)	range	your result	z-score
Total Group	89	109	10.7	87 - 137	108	-0.07
Clotting	89	109	10.7	87 - 137	108	-0.07
Hyphen Biomed Hemoclot Protein C	5	97		94 - 113		
I.L. HemosIL Proclot C	16	110	10.8	97 - 135	108	-0.16
Other	1	109				
Preclain Biologic Cryocheck Clot C	3	106		93 - 106		
Siemens Prot C Reagent (coagulometric)	20	102	5.9	88 - 115		
Stago Staclot Protein C	43	114	10.6	87 - 137		
Tocag TriniCLOT Protein C	1	124				



Thrombophilia Part 1

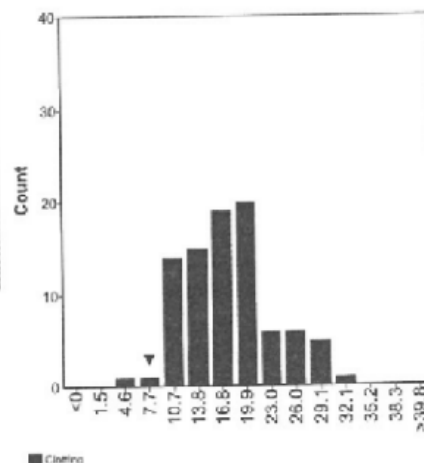
Protein C clotting activity

Sample No 16.14
Sample Details Abnormal Coagulation Control Plasma
Units: % or IU/dL
Prior Use: 2015-3
Stability 28-Feb-2017
Homogeneity 2.0 %
Response Rate 24 %

Homogeneity Parameter APTT

Classification	Normal	Borderline normal	Borderline abnormal	Abnormal	No classification
Total	0	0	2	87	0

	n	assigned value	CV (%)	range	your result	z-score
Total Group	88	18	31.5	6 - 31	8	-1.68
Clotting	68	18	31.5	6 - 31	8	-1.68
Hyphen Biomed Hemoclot Protein C	5	17		11 - 20		
I.L. HemosIL Proclot C	15	12	34.0	6 - 19	8	-0.91
Other	1	21				
Precision Biologic Cryocheck Clot C	3	14		13 - 26		
Siemens Prot C Reagent (coagulometric)	20	25	15.0	18 - 31		
Stago Staclot Protein C	43	17	18.1	11 - 22		
Tcoag TrinCLOT Protein C	1	11				



Thrombophilia Part 1

Protein S activity

No. of Responders
160

Sample No 16.13
Sample Details Normal Coagulation Control Plasma
Units: % or IU/dL
Prior Use: 2015-2

Stability 28-Feb-2017

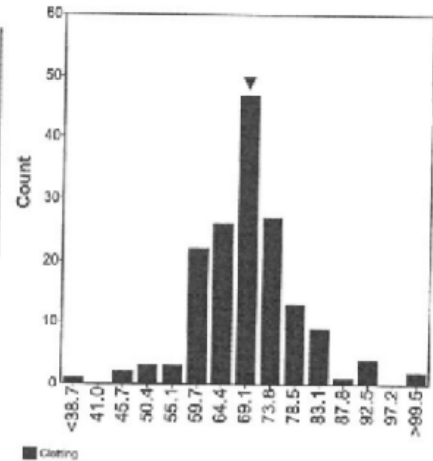
Homogeneity 1.2 %

Homogeneity Parameter APTT

Response Rate 44 %

Classification	Normal	BorderLine normal	Borderline abnormal	Abnormal	No classification
Total	111	17	14	14	4

	n	assigned value	CV (%)	range	your result	z-score
Total Group	160	69	11.0	30 - 104	68	-0.21
Clotting	160	69	11.0	30 - 104	68	-0.21
Hyphen Biomed Hemoclot Protein S	4	70		64 - 80		
I.L. Hemosil ProS	35	70	11.3	30 - 104	68	-0.36
Other	1	78				
Precision Biologic CryoCheck Clot S	2	62		57 - 66		
Siemens Protein S Ac	39	63	8.4	45 - 81		
Stago Staclot Protein S	79	72	9.0	46 - 94		



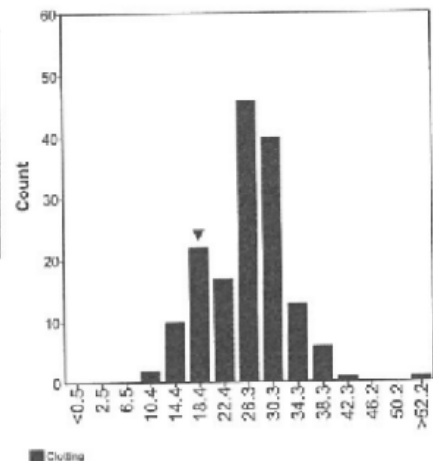
Thrombophilia Part 1
Protein S activity

Sample No 16.14
 Sample Details Abnormal Coagulation Control Plasma
 Units: % or IU/dL
 Prior Use: 2015-3
 Stability 28-Feb-2017
 Homogeneity 2.0 %
 Response Rate 44 %

Homogeneity Parameter APTT

Classification	Normal	BorderLine normal	Borderline abnormal	Abnormal	No classification
Total	2	0	1	156	0

	n	assigned value	CV (%)	range	your result	z-score
Total Group	158	26	24.5	10 - 94	18	-1.37
Clotting	158	26	24.5	10 - 94	18	-1.37
Hyphen Biomed Hemoclot Protein S	4	29		27 - 34		
I.L. HemosIL ProS	35	19	26.9	10 - 94	18	-0.37
Other	1	19				
Precision Biologic CryoCheck Clot S	2	28		18 - 37		
Siemens Protein S Ac	39	24	14.2	12 - 34		
Stago Stacot Protein S	77	30	12.2	18 - 43		



Thrombophilia Part 2

APC Resistance (with FV deficient plasma)

No. of Responders
191

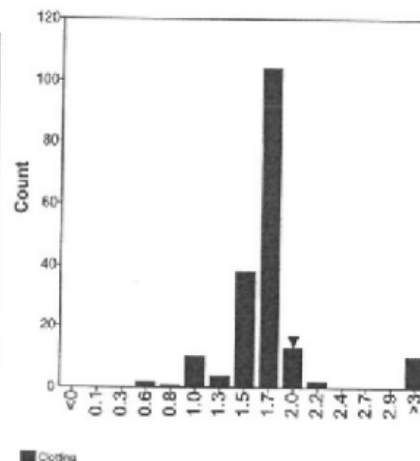
Sample No 16.15
Sample Details Plasma of a patient with a heterozygous Factor V Leiden mutation
Units:
Prior Use: None
Stability 31-Dec-2016
Homogeneity 4.6 %
Response Rate 52 %

Homogeneity Parameter APC ratio

Classification	Normal	Borderline	Abnormal	No classification
Total	2	1	187	1

Secondary Classification	Homozygous FVL	Heterozygous FVL	Non conclusive
Total	8	117	20

	n	assigned value	CV (%)	range	your result	z-score
Total Group	174	1.64	14.7	0.52 - 2.14	1.86	
American Diagnostica APC	2	1.52		1.30 - 1.74		
Chromogenix APCR-V / I.L. HemosIL FVL	95	1.76	4.8	1.50 - 2.14	1.86	1.23
Chromogenix Coatest APC Resistance	25	1.69	3.4	1.59 - 1.80		
Homemade	4	1.46		1.37 - 1.90		
Hyphen Biomed Hemoclot V-L	2	1.64		1.61 - 1.66		
Other	2	1.92		1.74 - 2.10		
Pentapharm Pefakit APC-R FVL	27	1.58	5.1	1.43 - 1.73		
Siemens ProC Global / FV	17	1.05	24.6	0.62 - 1.40		
Stago Staclot APC-R	10	73.36	5.3	67.90 - 79.00		
Normalised ratio	64	0.61	18.1	0.26 - 1.75	0.61	-0.02



Thrombophilia Part 2

APC Resistance (with FV deficient plasma)

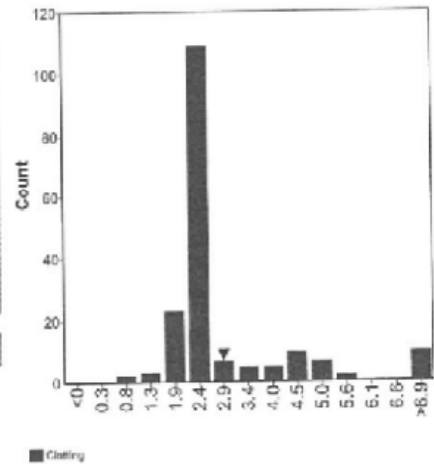
Sample No 16.16
Sample Details Normal Coagulation Control Plasma
Units:
Prior Use: 2015-3 and 2015-4
Stability 28-Feb-2017
Homogeneity 1.2 %
Response Rate 52 %

Homogeneity Parameter APTT

Classification	Normal	Borderline	Abnormal	No classification
Total	173	10	5	2

Secondary Classification	Homozygous FVL	Heterozygous FVL	Non conclusive
Total	1	2	1

	n	assigned value	CV (%)	range	your result	z-score
Total Group	173	2.67	33.1	0.88 - 5.70	2.66	
American Diagnostica APC	2	2.68		2.26 - 3.10		
Chromogenix APCR-V / I.L. HemosIL FVL	94	2.42	8.1	1.99 - 3.06	2.66	1.19
Chromogenix Coatest APC Resistance	25	2.30	6.6	1.94 - 2.60		
Homemade	4	2.30		1.86 - 3.30		
Hyphen Biomed Hemodot V-L	2	2.05		2.00 - 2.09		
Other	2	2.88		2.45 - 3.30		
Pentapharm Pefakit APC-R FVL	27	4.61	13.3	3.19 - 5.70		
Siemens ProC Global / FV	17	1.77	29.8	0.88 - 2.40		
Stago Staclot APC-R	10	141.81	11.5	111.20 - 176.		
Normalised ratio	64	0.89	7.6	0.65 - 2.45	0.87	-0.31



Clotting Factor Module I

Factor VIII (clotting activity)

No. of Responders
223

Sample No 16.20
Sample Details Plasma of a patient with a mild Haemophilia B
Units: % or IU/dL
Prior Use: None

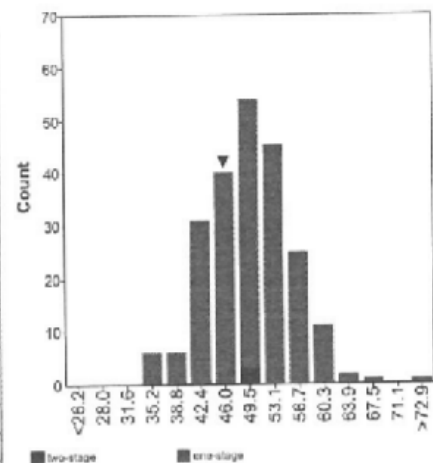
Stability 24-Aug-2016

Homogeneity 0.0 % Homogeneity Parameter FIX

Response Rate 86 %

Classification	Normal	BorderLine normal	Borderline abnormal	Abnormal	No classification
Total	33	40	47	103	0

	n	assigned value	CV (%)	range	your result	z-score
Total Group	222	50	11.7	34 - 92	45	-0.78
two-stage clotting assay	3	50		49 - 51		
IL HemosIL SynthASil	1	51				
Siemens Actin FSL	1	50				
Siemens Pathromin SL	1	49				
one-stage clotting assay	219	50	11.8	34 - 92	45	-0.77
IL HemosIL APTT lyophilised silica	1	51				
IL HemosIL APTT-SP liquid silica	11	42	14.3	38 - 52		
IL HemosIL SynthASil	56	45	7.5	34 - 92	45	0.01
Siemens Actin	2	60		60 - 60		
Siemens Actin FS	28	52	8.1	44 - 64		
Siemens Actin FSL	14	52	8.7	44 - 60		
Siemens Pathromin SL	24	53	9.5	42 - 63		
Stago Cephalin/Kaolin/CK Prest	29	51	6.7	34 - 58		
Stago Cephascreen	8	51		41 - 61		
Stago PTT (automate)/STA APTT	31	51	10.6	38 - 62		
Stago PTT-LA	2	49		45 - 53		
Tcoag Automated APTT	3	47		45 - 66		
Tcoag TriniClot APTT S	5	46		45 - 55		
Tcoag TriniClot APTT-HS	5	53		50 - 55		



Clotting Factor Module I

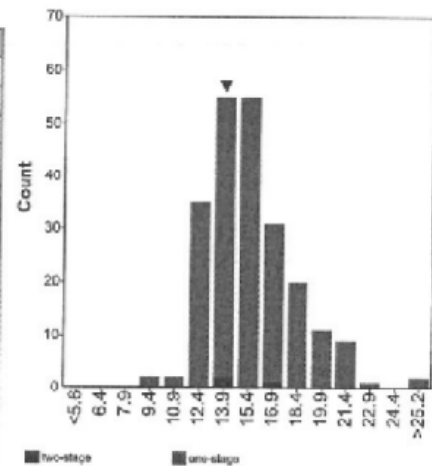
Factor VIII (clotting activity)

Sample No 16.21
 Sample Details Abnormal Coagulation Control Plasma
 Units: % or IU/dL
 Prior Use: None
 Stability 31-Dec-2017
 Homogeneity 2.0 %
 Response Rate 86 %

Homogeneity Parameter APTT

Classification	Normal	BorderLine normal	Borderline abnormal	Abnormal	No classification
Total	1	0	1	221	0

	n	assigned value	CV (%)	range	your result	z-score
Total Group	223	15	15.8	9 - 28	14	-0.66
two-stage clotting assay	3	14		14 - 17		
IL HemosIL SynthASII	1	14				
Siemens Actin FSL	1	14				
Siemens Pathromin SL	1	17				
one-stage clotting assay	220	15	15.9	9 - 28	14	-0.66
IL HemosIL APTT lyophilised silica	1	15				
IL HemosIL APTT-SP liquid silica	11	16	20.6	12 - 21		
IL HemosIL SynthASII	57	15	13.1	9 - 28	14	-0.51
Siemens Actin	2	22		17 - 28		
Siemens Actin FS	28	15	13.0	13 - 21		
Siemens Actin FSL	14	15	20.8	12 - 20		
Siemens Pathromin SL	24	17	13.7	14 - 22		
Stago Cephalin/Kaolin/CK Prest	29	15	16.3	12 - 21		
Stago Cephascreen	8	15		9 - 20		
Stago PTT (automate)/STA APTT	31	16	16.6	11 - 20		
Stago PTT-LA	2	16		15 - 17		
Tcoag Automated APTT	3	15		13 - 18		
Tcoag TriniClot APTT S	5	14		11 - 16		
Tcoag TriniClot APTT-HS	5	20		15 - 23		



Clotting Factor Module I

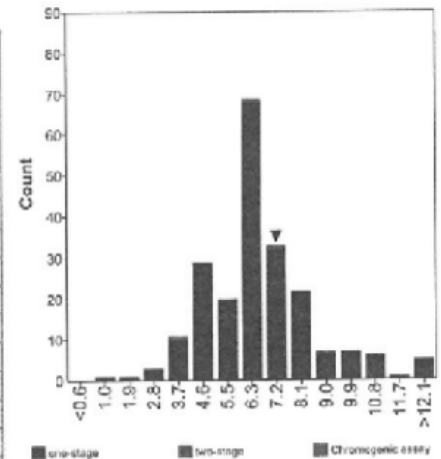
Factor IX

No. of Responders
218

Sample No 16.20
Sample Details Plasma of a patient with a mild Haemophilia B
Units: % or IU/dL
Prior Use: None
Stability 24-Aug-2016
Homogeneity 0.0 % Homogeneity Parameter FIX
Response Rate 84 %

Classification	Normal	BorderLine normal	Borderline abnormal	Abnormal	No classification
Total	3	0	0	215	0

	n	assigned value	CV (%)	range	your result	z-score
Total Group	215	6	22.8	1 - 72	7	0.36
one-stage clotting assay	211	6	22.6	1 - 72	7	0.37
IL HemosIL APTT lyophilised silica	4	6		5 - 8		
IL HemosIL APTT-SP liquid silica	8	6		4 - 11		
IL HemosIL SynthAsil	58	6	13.2	5 - 9	7	1.03
Siemens Actin	3	7		6 - 10		
Siemens Actin FS	25	6	12.8	5 - 10		
Siemens Actin FSL	13	6	35.1	4 - 14		
Siemens Pathromtin SL	22	8	63.0	1 - 28		
Stago Cephalin/Kaolin/CK Prest	28	6	17.0	5 - 72		
Stago Cephascreen	8	7		6 - 9		
Stago PTT (automate)/STAAPTT	28	7	29.0	2 - 10		
Stago PTT-LA	1	6				
Tcoag Automated APTT	3	8		7 - 10		
Tcoag TriniClot APTT S	5	7		5 - 8		
Tcoag TriniClot APTT-HS	5	9		6 - 10		
Chromogenic assay	1	4				
Other	1	4				
two-stage clotting assay	3	7		6 - 9		
IL HemosIL SynthAsil	1	7				
Siemens Actin FSL	1	6				
Siemens Pathromtin SL	1	9				



Clotting Factor Module I

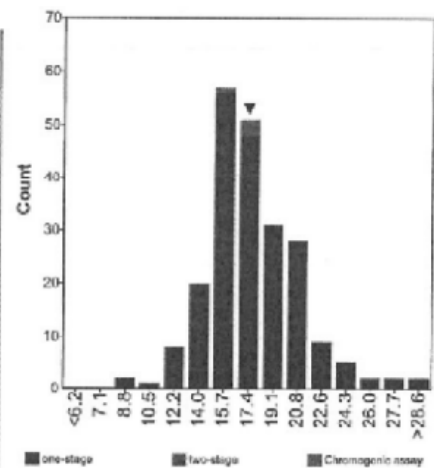
Factor IX

Sample No 16.21
 Sample Details Abnormal Coagulation Control Plasma
 Units: % or IU/dL
 Prior Use: None
 Stability 31-Dec-2017
 Homogeneity 2.0 %
 Response Rate 84 %

Homogeneity Parameter APTT

Classification	Normal	BorderLine normal	Borderline abnormal	Abnormal	No classification
Total	1	0	0	215	2

	n	assigned value	CV (%)	range	your result	z-score
Total Group	218	17	15.8	9 - 68	17	-0.30
one-stage clotting assay	214	17	16.1	9 - 68	17	-0.30
IL HemosIL APTT lyophilised silica	4	18		13 - 20		
IL HemosIL APTT-SP liquid silica	8	17		15 - 24		
IL HemosIL SynthAsil	58	15	10.7	12 - 20	17	0.67
Siemens Actin	3	20		17 - 24		
Siemens Actin FS	25	18	12.2	15 - 26		
Siemens Actin FSL	13	16	29.8	9 - 25		
Siemens Pathromtin SL	25	19	17.7	9 - 28		
Stago Cephalin/Kacolin/CK Prest	28	18	13.2	14 - 68		
Stago Cephascreen	8	19		16 - 23		
Stago PTT (automate)/STA APTT	28	19	15.0	14 - 32		
Stago PTT-LA	1	18				
Tcoag Automated APTT	3	20		18 - 20		
Tcoag TriniClot APTT S	5	19		12 - 21		
Tcoag TriniClot APTT-HS	5	19		18 - 21		
Chromogenic assay	1	17				
Other	1	17				
two-stage clotting assay	3	17		16 - 18		
IL HemosIL SynthAsil	1	16				
Siemens Actin FSL	1	17				
Siemens Pathromtin SL	1	18				



Clotting Factor Module I

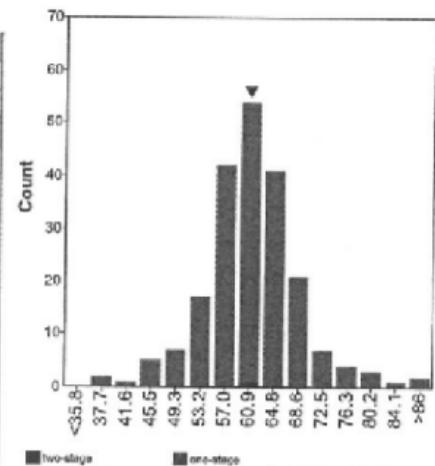
Factor XI

No. of Responders
207

Sample No 16.20
Sample Details Plasma of a patient with a mild Haemophilia B
Units: % or IU/dL
Prior Use: None
Stability 24-Aug-2016
Homogeneity 0.0 % Homogeneity Parameter FIX
Response Rate 80 %

Classification	Normal	BorderLine normal	Borderline abnormal	Abnormal	No classification
Total	86	27	39	53	2

	n	assigned value	CV (%)	range	your result	z-score
Total Group	207	61	10.2	38 - 90	62	0.23
two-stage clotting assay	1	62				
Siemens Pathromtin SL	1	62				
one-stage clotting assay	206	61	10.3	38 - 90	62	0.23
IL HemosIL APTT lyophilised silica	3	68		60 - 74		
IL HemosIL APTT-SP liquid silica	9	56		48 - 70		
IL HemosIL SynthAsil	55	62	7.7	54 - 79	62	0.12
Siemens Actin	2	63		58 - 69		
Siemens Actin FS	26	60	8.0	52 - 71		
Siemens Actin FSL	14	62	15.1	46 - 76		
Siemens Pathromtin SL	23	60	10.4	45 - 80		
Stago Cephalin/Kaolin/CK Prest	27	60	12.0	38 - 90		
Stago Cephascreen	6	67		49 - 83		
Stago PTT (automate)/STA APTT	27	62	14.5	40 - 86		
Stago PTT-LA	1	61				
Tcoag Automated APTT	3	67		53 - 60		
Tcoag TriniClot APTT S	5	65		55 - 74		
Tcoag TriniClot APTT-HS	5	52		45 - 58		

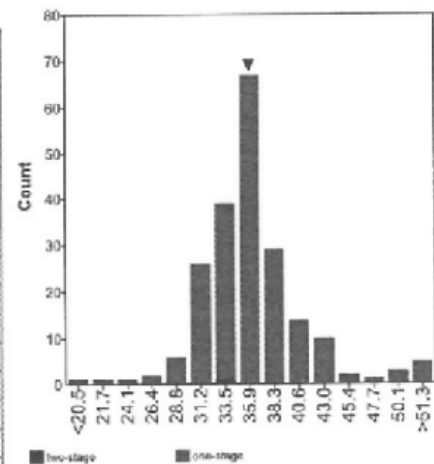


Clotting Factor Module I
Factor XI

Sample No 16.21
Sample Details Abnormal Coagulation Control Plasma
 Units: % or IU/dL
 Prior Use: None
Stability 31-Dec-2017
Homogeneity 2.0 % **Homogeneity Parameter** APTT
Response Rate 80 %

Classification	Normal	BorderLine normal	Borderline abnormal	Abnormal	No classification
Total	1	1	7	196	2

	n	assigned value	CV (%)	range	your result	z-score
Total Group	207	36	10.7	11 - 56	36	-0.10
two-stage clotting assay	1	34				
Siemens Pathromtin SL	1	34				
one-stage clotting assay	206	36	10.7	11 - 56	36	-0.10
IL HemosIL APTT lyophilized silica	3	44		39 - 45		
IL HemosIL APTT-SP liquid silica	9	36		34 - 49		
IL HemosIL SynthAsil	55	35	7.6	28 - 49	36	0.04
Siemens Actin	2	41		39 - 44		
Siemens Actin FS	26	36	6.5	31 - 42		
Siemens Actin FSL	14	38	13.7	27 - 43		
Siemens Pathromtin SL	23	37	11.6	25 - 49		
Stago Cephalin/Kaolin/CK Proct	27	35	19.7	11 - 53		
Stago Cephascreen	6	36		27 - 52		
Stago PTT (automate)/STA APTT	27	36	12.1	30 - 56		
Stago PTT-LA	1	32				
Tcoag Automated APTT	3	34		32 - 36		
Tcoag TriniClot APTT 5	5	37		33 - 40		
Tcoag TriniClot APTT-HS	5	34		33 - 37		



Clotting Factor Module I

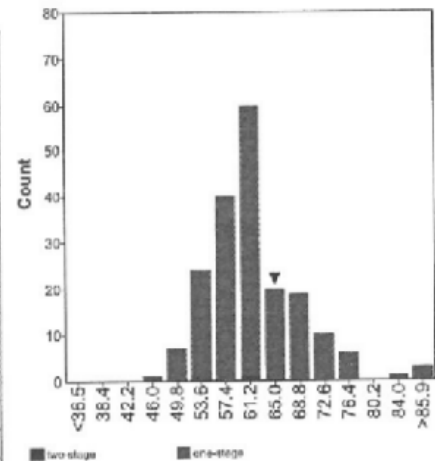
Factor XII

No. of Responders
191

Sample No 16.20
Sample Details Plasma of a patient with a mild Haemophilia B
Units: % or IU/dL
Prior Use: None
Stability 24-Aug-2016
Homogeneity 0.0 % Homogeneity Parameter FIX
Response Rate 74 %

Classification	Normal	BorderLine normal	Borderline abnormal	Abnormal	No classification
Total	105	28	17	40	1

	n	assigned value	CV (%)	range	your result	z-score
Total Group	191	61	10.1	47 - 106	66	0.84
two-stage clotting assay	1	60				
Siemens Pathromtin SL	1	60				
one-stage clotting assay	180	61	10.1	47 - 106	66	0.83
Helena Laboratories APTT-SA	1	68				
IL HemosIL APTT (lyophilized silica)	2	65		55 - 75		
IL HemosIL APTT-SP liquid silica	8	59		52 - 74		
IL HemosIL SynthAsil	54	60	8.5	50 - 75	66	1.17
Siemens Actin	2	61		60 - 62		
Siemens Actin FS	26	62	7.0	51 - 69		
Siemens Actin FSL	11	64	8.9	54 - 106		
Siemens Pathromtin SL	21	57	8.8	50 - 72		
Stago Caphalin/Kaolin/CK Prest	29	63	11.0	54 - 84		
Stago Cephacscreen	6	59		54 - 76		
Stago PTT (automate)/STAAPTT	16	65	15.9	51 - 86		
Tcoag Automated APTT	3	54		47 - 61		
Tcoag TriniClot APTT S	6	67		60 - 91		
Tcoag TriniClot APTT-HS	5	63		59 - 65		



Clotting Factor Module I

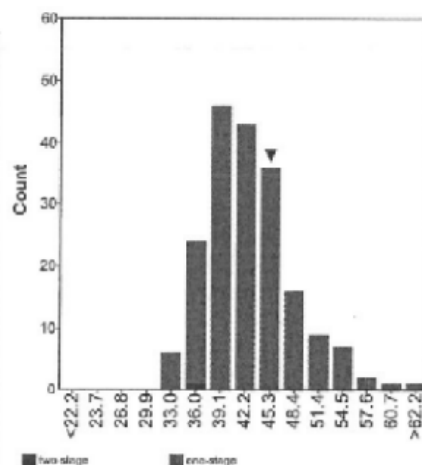
Factor XII

Sample No 16.21
 Sample Details Abnormal Coagulation Control Plasma
 Units: % or IU/dL
 Prior Use: None
 Stability 31-Dec-2017
 Homogeneity 2.0 %
 Response Rate 74 %

Homogeneity Parameter APTT

Classification	Normal	BorderLine normal	Borderline abnormal	Abnormal	No classification
Total	14	6	16	154	1

	n	assigned value	CV (%)	range	your result	z-score
Total Group	191	42	11.8	32 - 66	44	0.40
two-stage clotting assay	1	37				
Siemens Pathrombin SL	1	37				
one-stage clotting assay	190	42	11.8	32 - 66	44	0.40
Helena Laboratories APTT-SA	1	43				
IL HemosIL APTT lyophilised silica	2	37		34 - 40		
IL HemosIL APTT-SP liquid silica	8	42		38 - 54		
IL HemosIL SynthAsil	54	40	10.9	32 - 50	44	0.64
Siemens Actin	2	44		44 - 45		
Siemens Actin FS	28	44	8.2	37 - 55		
Siemens Actin FSL	11	43	7.2	38 - 54		
Siemens Pathrombin SL	21	39	8.6	33 - 46		
Stago Cephalin/Kaolin/CK Prest	29	43	13.8	35 - 59		
Stago Cephascreen	8	40		37 - 47		
Stago PTT (automate)/STA APTT	16	48	18.1	35 - 66		
Toag Automated APTT	3	42		38 - 43		
Toag TriniClot APTT S	6	49		43 - 60		
Toag TriniClot APTT-HS	5	45		41 - 46		



Clotting Factor Module II

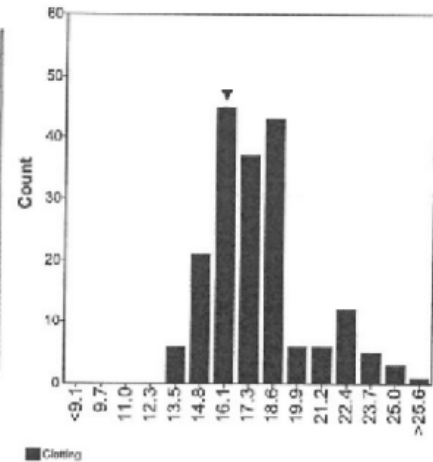
Factor II

No. of Responders
185

Sample No 16.22
 Sample Details Abnormal Coagulation Control Plasma
 Units: % or IU/dL
 Prior Use: None
 Stability 31-Dec-2017
 Homogeneity 2.2 % Homogeneity Parameter PT
 Response Rate 83 %

Classification	Normal	BorderLine normal	Borderline abnormal	Abnormal	No classification
Total	1	0	0	182	2

	n	assigned value	CV (%)	range	your result	z-score
Total Group	185	17	11.9	13 - 101	16	-0.75
Clotting Assay	185	17	11.9	13 - 101	16	-0.75
I.L. HemosIL PT-Fibrinogen - HS Plus	2	16		15 - 17		
I.L. HemosIL Recombiplastin 2G	66	16	7.4	14 - 21	16	-0.37
Siemens Innovin	33	19	17.0	14 - 25		
Siemens Pathromtin SL	1	23				
Siemens Thromborel S	23	20	16.7	16 - 101		
Stago (STA) Neoplastin CI	10	17	6.6	16 - 25		
Stago (STA) Neoplastin CI Plus	40	17	8.2	16 - 23		
Stago Neoplastin R	6	17		15 - 20		
Toocag TriniCLOT PT Excel	1	20				
Toocag TriniCLOT PT HTF	3	14		13 - 18		



Clotting Factor Module II

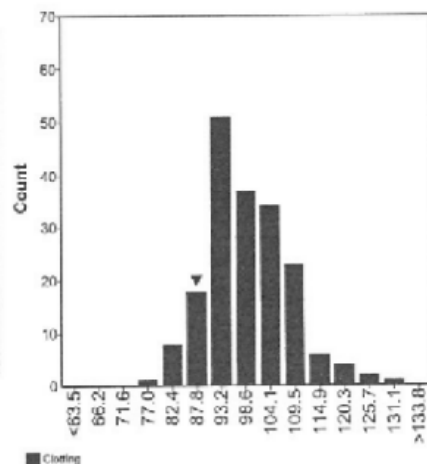
Factor II

Sample No 16.23
 Sample Details Normal Coagulation Control Plasma
 Units: % or IU/dL
 Prior Use: None
 Stability 28-Feb-2017
 Homogeneity 1.6 %
 Response Rate 83 %

Homogeneity Parameter PT

Classification	Normal	BorderLine normal	Borderline abnormal	Abnormal	No classification
Total	180	0	0	2	3

	n	assigned value	CV (%)	range	your result	z-score
Total Group	185	99	8.9	75 - 132	89	-1.08
Clotting Assay	185	99	8.9	75 - 132	89	-1.08
I.L. HemosIL PT-Fibrinogen - HS Plus	2	100		93 - 107		
I.L. HemosIL Recombiplastin 2G	66	94	7.0	80 - 112	89	-0.75
Siemens Innovin	33	107	6.0	94 - 121		
Siemens Pathromtin SL	1	109				
Siemens Thromborel S	23	106	12.0	75 - 132		
Stago (STA) Neoplastin CI	10	93	5.7	87 - 104		
Stago (STA) Neoplastin CI Plus	40	97	6.5	83 - 116		
Stago Neoplastin R	6	96		88 - 105		
Tcoag TriniCLOT PT Excel	1	103				
Tcoag TriniCLOT PT IITF	3	98		93 - 108		



Clotting Factor Module II

Factor V

No. of Responders
195

Sample No 16.22
Sample Details Abnormal Coagulation Control Plasma
Units: % or IU/dL
Prior Use: None

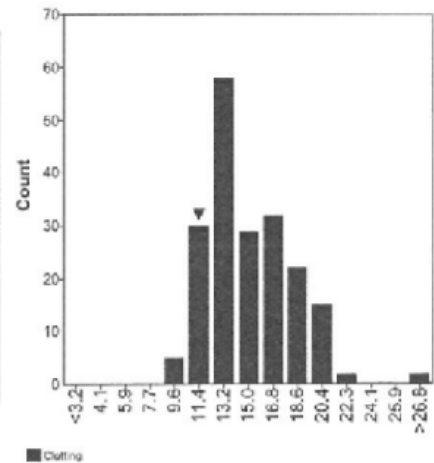
Stability 31-Dec-2017

Homogeneity 2.2 % Homogeneity Parameter PT

Response Rate 88 %

Classification	Normal	BorderLine normal	Borderline abnormal	Abnormal	No classification
Total	1	0	0	192	2

	n	assigned value	CV (%)	range	your result	z-score
Total Group	195	15	19.7	9 - 28	12	-0.98
Clotting Assay	195	15	19.7	9 - 28	12	-0.98
I.L. HemosIL PT-Fibrinogen	1	14				
I.L. HemosIL PT-Fibrinogen - HS Plus	1	20				
I.L. HemosIL Recombiplastin 2G	69	14	15.0	10 - 22	12	-1.08
Siemens Innovin	37	14	24.1	9 - 21		
Siemens Thromborel S	24	17	19.8	11 - 28		
Stago (STA) Neoplastin CI	6	15		12 - 17		
Stago (STA) Neoplastin CI Plus	44	16	18.1	11 - 21		
Stago Neoplastin R	9	14		12 - 19		
Tcoag Simplastin HTF	2	17		16 - 18		
Tcoag TriniCLOT PT Excel	1	14				
Technodone Technoplastin HIS	1	12				

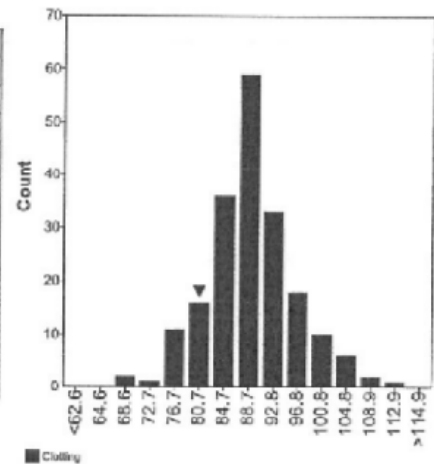


Clotting Factor Module II
Factor V

Sample No 16.23
Sample Details Normal Coagulation Control Plasma
 Units: % or IU/dL
 Prior Use: None
Stability 28-Feb-2017
Homogeneity 1.6 % **Homogeneity Parameter** PT
Response Rate 88 %

Classification	Normal	BorderLine normal	Borderline abnormal	Abnormal	No classification
Total	187	1	2	0	5

	n	assigned value	CV (%)	range	your result	z-score
Total Group	195	89	7.4	67 - 111	83	-0.95
Clotting Assay	195	89	7.4	67 - 111	83	-0.95
I.L. HemosIL PT-Fibrinogen	1	89				
I.L. HemosIL PT-Fibrinogen - HS Plus	1	109				
I.L. HemosIL Recombiplastin 2G	68	89	7.8	70 - 106	83	-0.95
Siemens Innovin	37	90	5.1	78 - 111		
Siemens Thromborel S	24	89	8.0	79 - 102		
Stago (STA) Neoplastin CI	6	90		84 - 96		
Stago (STA) Neoplastin CI Plus	44	88	7.5	76 - 99		
Stago Neoplastin R	9	83		67 - 83		
Coag Simplastin HTF	2	83		82 - 84		
Coag TriniCLOT PT Excel	1	73				
Technoclone Technoplastin HIS	1	82				





Clotting Factor Module II

Factor VII

No. of Responders
195

Sample No 16.22
Sample Details Abnormal Coagulation Control Plasma
Units: % or IU/dL
Prior Use: None

Stability 31-Dec-2017

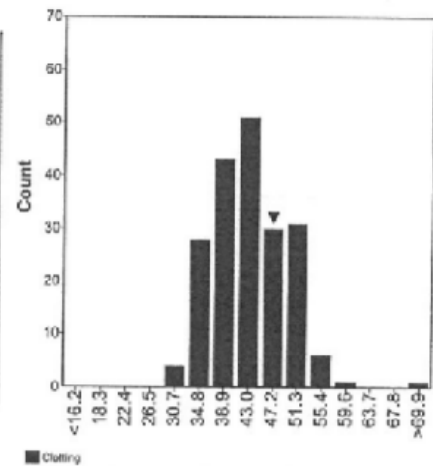
Homogeneity 2.2 %

Homogeneity Parameter PT

Response Rate 88 %

Classification	Normal	BorderLine normal	Borderline abnormal	Abnormal	No classification
Total	3	14	17	159	2

	n	assigned value	CV (%)	range	your result	z-score
Total Group	195	43	15.6	29 - 99	46	0.40
Clotting Assay	195	43	15.6	29 - 99	46	0.40
I.L. HemosIL PT-Fibrinogen - HS	1	46				
I.L. HemosIL PT-Fibrinogen - HS Plus	1	37				
I.L. HemosIL Recombiplastin 2G	70	45	12.6	34 - 60	46	0.21
Siemens Innovin	37	48	10.8	40 - 55		
Siemens Pathromlin SL	1	57				
Siemens Thromborel S	22	43	14.0	34 - 99		
Stago (STA) Neoplastin Ci	5	35		33 - 39		
Stago (STA) Neoplastin Ci Plus	46	37	10.2	29 - 49		
Stago Neoplastin R	8	45		36 - 50		
Tcoag Simplastin Excel S	1	37				
Tcoag Simplastin HTF	3	41		38 - 51		



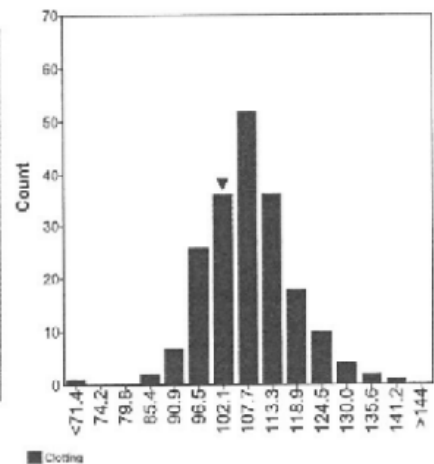
Clotting Factor Module II
Factor VII

Sample No 16.23
Sample Details Normal Coagulation Control Plasma
 Units: % or IU/dL
 Prior Use: None
Stability 28-Feb-2017
Homogeneity 1.6 %
Response Rate 88 %

Homogeneity Parameter PT

Classification	Normal	BorderLine normal	Borderline abnormal	Abnormal	No classification
Total	189	0	0	3	3

	n	assigned value	CV (%)	range	your result	z-score
Total Group	195	108	8.4	65 - 140	103	-0.52
Clotting Assay	195	108	8.4	65 - 140	103	-0.52
I.L. HemosIL PT-Fibrinogen - HS	1	99				
I.L. HemosIL PT-Fibrinogen - HS Plus	1	110				
I.L. HemosIL Recombiplastin 2G	70	104	6.7	65 - 131	103	-0.21
Siemens Innovin	37	114	8.1	96 - 140		
Siemens Pathromtin SL	1	134				
Siemens Thromborel S	22	109	9.0	97 - 137		
Stago (STA) Neoplastin CI	5	93		87 - 110		
Stago (STA) Neoplastin CI Plus	46	108	7.9	86 - 122		
Stago Neoplastin R	8	105		97 - 118		
Tcoag Simplastin Excel S	1	116				
Tcoag Simplastin HTF	3	115		110 - 125		



Clotting Factor Module II

Factor X

No. of Responders
187

Sample No 16.22
Sample Details Abnormal Coagulation Control Plasma
Units: % or IU/dL
Prior Use: None

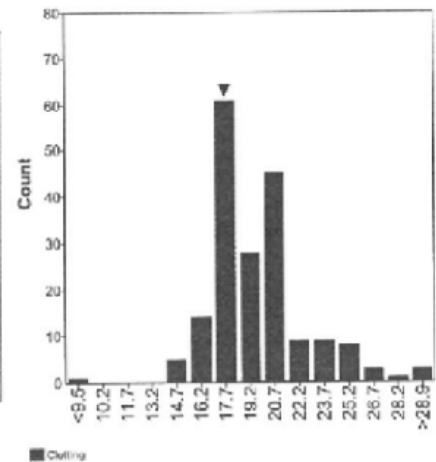
Stability 31-Dec-2017

Homogeneity 2.2 % Homogeneity Parameter PT

Response Rate 84 %

Classification	Normal	BorderLine normal	Borderline abnormal	Abnormal	No classification
Total	1	0	0	183	3

	n	assigned value	CV (%)	range	your result	z-score
Total Group	187	19	12.6	9 - 97	18	-0.59
Clotting Assay	187	19	12.6	9 - 97	18	-0.59
I.L. HemosIL PT-Fibrinogen	1	22				
I.L. HemosIL PT-Fibrinogen - HS Plus	1	20				
I.L. HemosIL Recombiplastin 2G	65	18	11.3	9 - 24	18	-0.31
Siemens Innovin	36	21	11.4	16 - 31		
Siemens Pathromtin SL	1	31				
Siemens Thromborel S	24	22	18.7	16 - 87		
Stago (STA) Neoplastin CI	7	18		16 - 20		
Stago (STA) Neoplastin CI Plus	40	18	7.8	15 - 24		
Stago Neoplastin R	8	20		18 - 20		
Tcoag Simplastin HTP	3	17		17 - 19		
Tcoag TriniCLOT PT Excel	1	16				

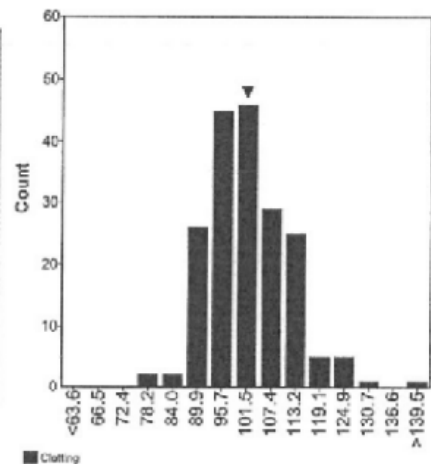


Clotting Factor Module II **Factor X**

Sample No 16.23
 Sample Details Normal Coagulation Control Plasma
 Units: % or IU/dL
 Prior Use: None
 Stability 28-Feb-2017
 Homogeneity 1.6 % Homogeneity Parameter PT
 Response Rate 84 %

Classification	Normal	BorderLine normal	Borderline abnormal	Abnormal	No classification
Total	179	0	2	1	5

	n	assigned value	CV (%)	range	your result	z-score
Total Group	187	102	9.3	76 - 159	102	0.03
Clotting Assay	187	102	9.3	76 - 159	102	0.03
I.L. HemosIL PT-Fibrinogen	1	103				
I.L. HemosIL PT-Fibrinogen - HS Plus	1	111				
I.L. HemosIL Recombiplastin 2G	66	98	7.3	76 - 116	102	0.56
Siemens Innovin	36	111	8.0	92 - 159		
Siemens Pathromtin SL	1	130				
Siemens Thromborel S	24	107	9.1	88 - 122		
Stago (STA) Neoplastin CI	7	93		76 - 112		
Stago (STA) Neoplastin CI Plus	40	98	6.8	87 - 115		
Stago Neoplastin R	8	102		92 - 109		
Tcoag Simplastin HIF	3	98		95 - 102		
Tcoag TrinicLOT PT Excel	1	81				



Von Willebrand Factor Module

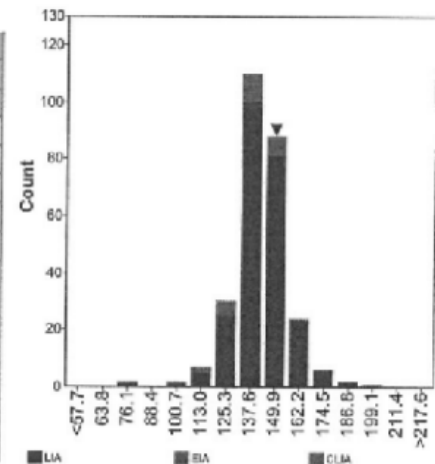
VWF antigen

No. of Responders
273

Sample No 16.24
Sample Details Normal Coagulation Control Plasma
Units: % or IU/dL
Prior Use: None
Stability 31-Dec-2017
Homogeneity 1.6 % Homogeneity Parameter APTT
Response Rate 89 %

Classification	Normal	BorderLine normal	Borderline abnormal	Abnormal	No classification
Total	259	1	3	5	5

	n	assigned value	CV (%)	range	your result	z-score
Total Group	272	143	7.8	74 - 205	150	0.70
Latex Immuno Assay	244	143	7.5	74 - 186	150	0.68
I.L. VWF	71	150	10.3	108 - 186	150	0.04
Siemens VWF	74	142	4.8	74 - 178		
Stago / Roche Liatest vWF	99	140	6.0	108 - 171		
Enzyme Immuno Assay	20	138	14.5	76 - 205		
BioMerieux Vidas vWF	5	154		76 - 205		
DG-EIA vWF	1	154				
Homemade (DAKO antibodies)	9	142		114 - 152		
Homemade (other)	1	127				
Reads VWF antigen	1	144				
Stago Asserachrom vWF	2	124		110 - 138		
Technoclone vWF Ag	1	95				
CLIA	8	139		122 - 145		
I.L. AcuStar VWF	8	139		122 - 145		



Von Willebrand Factor Module

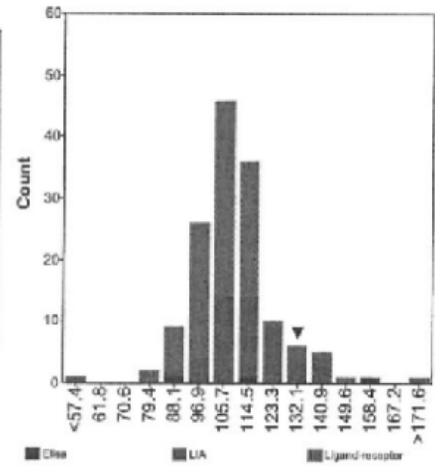
VWF activity

No. of Responders
145

Sample No 16.24
 Sample Details Normal Coagulation Control Plasma
 Units: % or IU/dL
 Prior Use: None
 Stability 31-Dec-2017
 Homogeneity 1.6 % Homogeneity Parameter APTT
 Response Rate 47 %

Classification	Normal	BorderLine normal	Borderline abnormal	Abnormal	No classification
Total	138	0	1	0	6

	n	assigned value	CV (%)	range	your result	z-score
Total Group	144	108	10.6	47 - 172	136	2.40
Elisa	3	118		92 - 156		
ABP vWF assay	1	118				
DG-EIA VWF Activity	1	92				
Reaads vWF activity	1	158				
Latex ImmunoAssay	51	114	12.5	47 - 172	136	1.49
Homemade	1	102				
I.L. Latex vWF activity	49	115	12.6	47 - 172	136	1.43
Other	1	105				
Particle ligand-receptor assay	90	105	8.9	78 - 146		
Siemens Innovance vWF Ac	90	105	8.9	78 - 146		



Von Willebrand Factor Module

VWF Collagen Binding Assay

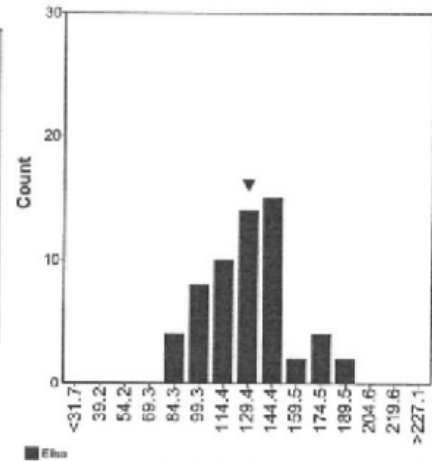
No. of Responders
65

Sample No 16.24
Sample Details Normal Coagulation Control Plasma
Units: % or IU/dL
Prior Use: None
Stability 31-Dec-2017
Homogeneity 1.6 %
Response Rate 21 %

Homogeneity Parameter APTT

Classification	Normal	BorderLine normal	Borderline abnormal	Abnormal	No classification
Total	63	0	0	1	1

	n	assigned value	CV (%)	range	your result	z-score
Total Group	59	129	18.9	77 - 186	129	-0.03
ELISA	59	129	18.9	77 - 186	129	-0.03
Corgenix / Reaads CBA	2	114		102 - 125		
DG-EIA CBA	1	161				
Homemade (DAKO antibodies)	7	124		77 - 149		
Homemade (other)	1	118				
Hyphen Biomed CB activity	9	138		106 - 148		
Life Diagnostics vWF:CBA assay	4	112		100 - 145		
Progen vWF:CB Elisa	2	134		129 - 140	129	
Stago Asserachrom vWF:CBA	14	113	20.5	85 - 185		
Tecnoclone vWF:CBA assay	19	144	16.5	102 - 186		



Von Willebrand Factor Module

VWF Factor VIII

No. of Responders
228

Sample No 16.24
Sample Details Normal Coagulation Control Plasma
Units: % or IU/dL
Prior Use: None

Stability 31-Dec-2017

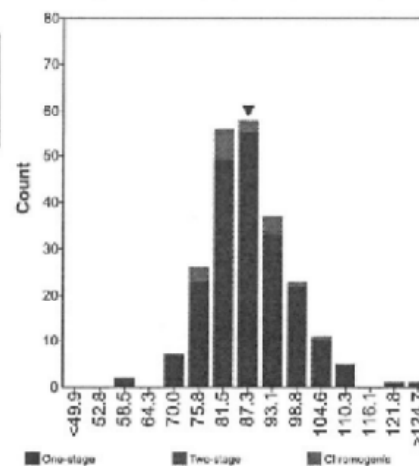
Homogeneity 1.6 %

Homogeneity Parameter APTT

Response Rate 74 %

Classification	Normal	BorderLine normal	Borderline abnormal	Abnormal	No classification
Total	220	2	0	0	6

	n	assigned value	CV (%)	range	your result	z-score
Total Group	227	87	10.5	60 - 137	85	-0.26
One-stage clotting assay	208	87	10.7	60 - 137	85	-0.26
Two-stage clotting assay	2	89		84 - 94		
Chromogenic assay	17	85	8.9	78 - 106		



Factor XIII

Factor XIII activity (quantitative)

No. of Responders
80

Sample No 16.29

Sample Details Abnormal Coagulation Control Plasma
Units: % or IU/dL
Prior Use: None

Stability 28-Feb-2017

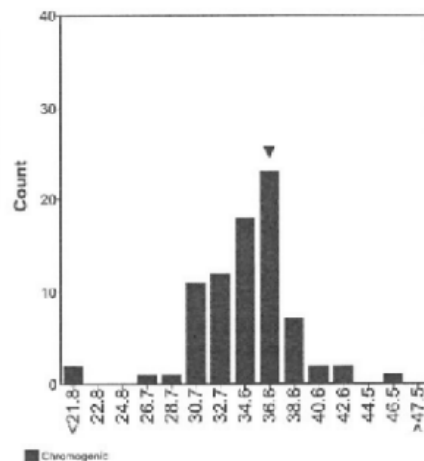
Homogeneity 2.0 %

Homogeneity Parameter APTT

Response Rate 56 %

Classification	Normal	BorderLine normal	Borderline abnormal	Abnormal	No classification
Total	1	0	4	73	0

	n	assigned value	CV (%)	range	your result	z-score
Total Group	80	35	9.3	12 - 47	37	0.70
Reanal-Ker Rea-chrom FXIII	1	38				
Siemens Berichrom Factor XIII (- blank co)	65	35	8.7	27 - 43	37	0.77
Siemens Berichrom Factor XIII (+ blank co)	5	35		12 - 36		
Stago Factor XIII	6	38		17 - 47		
Technoclone Technochrom FXIII	3	32		30 - 37		



Factor XIII

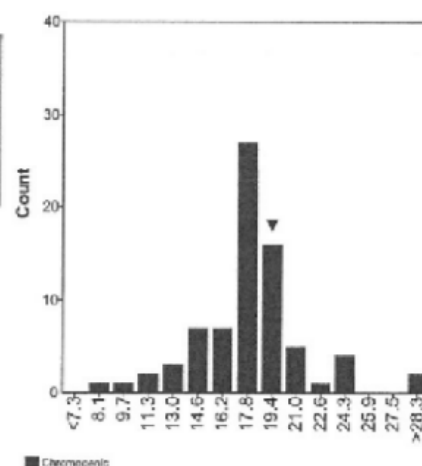
Factor XIII activity (quantitative)

Sample No 16.30
Sample Details Plasma with a Factor XIII level between 10 and 25%
 Units: % or IU/dL
 Prior Use: 2015-1
Stability 31-Jul-2016
Homogeneity 9.7 %
Response Rate 56 %

Homogeneity Parameter **FXIII activity**

Classification	Normal	BorderLine normal	Borderline abnormal	Abnormal	No classification
Total	1	0	1	76	0

	n	assigned value	CV (%)	range	your result	z-score
Total Group	76	18	14.7	8 - 30	19	0.39
Reanal-Ker Rea-chrom FXIII	1	21				
Siemens Berichrom Factor XIII (- blank co)	61	17	12.1	12 - 24	19	0.62
Siemens Berichrom Factor XIII (+ blank co)	5	18		13 - 21		
Stago Factor XIII	6	22		8 - 30		
Technoclone Technochrom FXIII	3	20		9 - 21		



Fibrinolysis II
PAI-1 antigen

No. of Responders

31

Sample No 16.33

Sample Details Plasma with an elevated PAI-1 level

Units: ng/mL

Prior Use: 2015-3

Stability 31-Oct-2016

Homogeneity 7.0 %

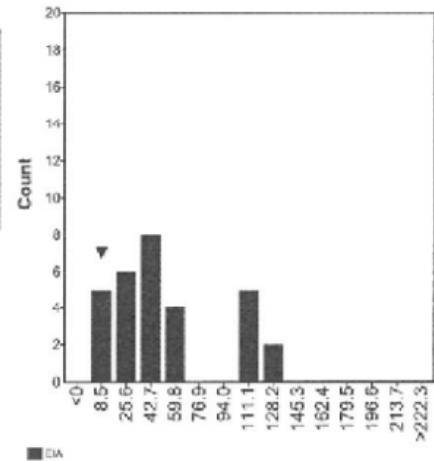
Homogeneity Parameter

PAI-1 antigen

Response Rate 46 %

Classification	Normal	BorderLine normal	Borderline abnormal	Abnormal	No classification
Total	11	0	0	19	1

	n	assigned value	CV (%)	range	your result	z-score
Total Group	30	53.3	79.3	15.0 - 125.7	17.1	-0.86
Homemade	1	35.0				
Hyphen Biomed Elitest PAI-1 antigen	2	47.3		45.5 - 49.0		
Hyphen Biomed Zymutest PAI-1 antigen	9	48.6		41.7 - 62.5		
Stago Asserachrom PAI-1	9	18.0		15.0 - 123.0	17.1	
Toag TriniLIZE PAI-1 antigen	3	24.3		16.7 - 31.2		
Technoclone Technozym PAI-1 antigen	6	115.0		112.0 - 125.7		





Fibrinolysis II

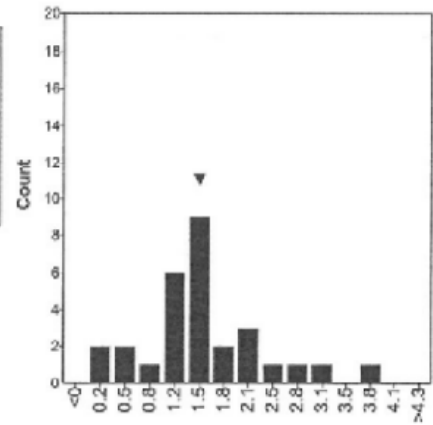
PAI-1 antigen

Sample No 16.34
Sample Details Plasma with an elevated t-PA level
 Units: ng/mL
 Prior Use: 2015-2
Stability 30-Nov-2016
Homogeneity 8.0 %
Response Rate 46 %

Homogeneity Parameter t-PA antigen

Classification	Normal	BorderLine normal	Borderline abnormal	Abnormal	No classification
Total	18	0	2	10	1

	n	assigned value	CV (%)	range	your result	z-score
Total Group	29	1.4	50.0	0.3 - 3.7	1.3	-0.14
Homemade	1	3.7				
Hyphen Biomed Elitest PAI-1 antigen	2	1.3		1.0 - 1.5		
Hyphen Biomed Zymutest PAI-1 antigen	10	1.6	25.5	1.1 - 2.0		
Stago Asserachrom PAI-1	9	1.4		0.3 - 3.0	1.3	
Tcoag TriniLIZE PAI-1 antigen	2	2.2		1.4 - 2.9		
Technoclone Technozym PAI-1 antigen	5	0.6		0.3 - 2.4		



■ PAI

Fibrinolysis II
t-PA antigen

 No. of Responders
 22

 Sample No 16.33
 Sample Details Plasma with an elevated PAI-1 level
 Units: ng/mL
 Prior Use: 2015-3

Stability 31-Oct-2016

Homogeneity 7.0 %

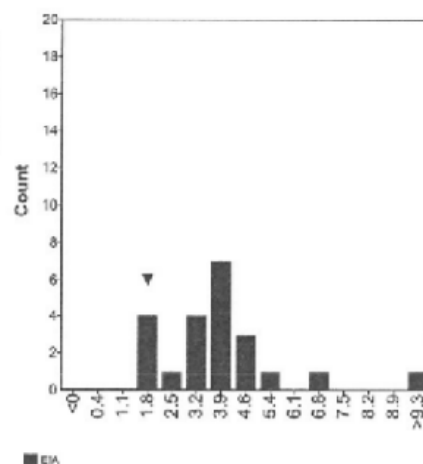
Homogeneity Parameter

PAI-1 antigen

Response Rate 33 %

Classification	Normal	BorderLine normal	Borderline abnormal	Abnormal	No classification
Total	17	1	1	3	0

	n	assigned value	CV (%)	range	your result	z-score
Total Group	22	3.7	38.1	1.6 - 36.0	1.6	-1.49
Hyphen Biomed Zymutest t-PA antigen	6	4.0		2.8 - 5.2		
Stago Asserachrom t-PA	12	4.1	31.5	1.8 - 36.0		
Technoclone Technozym t-PA antigen	4	2.0		1.6 - 2.2	1.8	



■ EIA

Fibrinolysis II

t-PA antigen

Sample No 16.34
Sample Details Plasma with an elevated t-PA level
 Units: ng/mL
 Prior Use: 2015-2
Stability 30-Nov-2016
Homogeneity 8.0 %
Response Rate 33 %

Homogeneity Parameter t-PA antigen

Classification	Normal	BorderLine normal	Borderline abnormal	Abnormal	No classification
Total	3	0	0	19	0

	n	assigned value	CV (%)	range	your result	z-score
Total Group	20	29.6	29.4	2.0 - 42.0	20.2	-1.06
Hyphen Biomed Zymutest t-PA antigen	4	27.3		24.0 - 38.0		
Stago Asserachrom t-PA	12	34.2	10.5	2.0 - 42.0		
Technoclone Technozym t-PA antigen	4	20.6		19.8 - 21.5	20.2	

